

HFNC Mt Napier State Park fauna survey with remote cameras in 2015-16 – final project report

Rod Bird

Hamilton Field Naturalists Club members had undertaken a survey of mammalian fauna using remote cameras and nest boxes in the Bear State Forest in 2012 & 2014 (see report in HFNC website), hoping to find the Brush-tailed Phascogale there. That quest was not successful but we hoped that we might have more success in the Mt Napier forest. We have had a chance sighting of Brush-tailed Phascogale (Tuan) in the Mt Napier SP at night in 1977 and a cat-captured Tuan in adjacent areas in 1989, but we have no knowledge of any recent sightings in the SW region.

We are also interested in establishing whether species such as Feather-tailed Glider (last seen from the Wannan Flora Reserve in 1977), Yellow-footed Antechinus, Southern Brown Bandicoot and Yellow-bellied Glider occur in the Mt Napier SP. Another species that is known from the Mt Eccles stones area is the Spot-tailed Quoll (*Dasyurus maculatus*); past anecdotal evidence from local farmers and photographic evidence from 1975 by the late Margaret Rundell (see Bird 1997) shows that the species was in the Mt Napier area and might still be there.

Recent availability and application of remote cameras for fauna survey work has allowed trap-shy animals to be more readily detected and surveys to be extended over a longer period, also increasing the chance of detecting more species.

Members of HFNC have undertaken fauna studies in the Mt Napier forest in years past. The studies by PR Bird from 1974-1995 (*The Victorian Naturalist* 1997) employed cage traps, pit-fall traps, harp bat traps, predator scat analysis, spotlight surveys and daylight observations. The study by Reto Zollinger in 2004 (unpublished) employed hair-tube samplers and the species identified are shown below.

Table 1. Mammals revealed in previous Mt Napier State Park fauna surveys

Rod Bird 1974-1995		Reto Zollinger 2004	
<i>Antechinus agilis</i>	Brown Antechinus	<i>Antechinus agilis</i>	Brown Antechinus
<i>Antechinus swainsonii</i>	Dusky Antechinus	<i>Antechinus swainsonii</i>	Dusky Antechinus
<i>Capra hircus</i>	Feral Goat		
<i>Felis catus</i>	Feral Cat	<i>Felis catus</i>	Feral Cat
<i>Lepus capensis</i>	European Hare		
<i>Macropus giganteus</i>	Eastern Grey Kangaroo		
<i>Mus musculus</i>	House Mouse		
<i>Oryctolagus cuniculus</i>	Rabbit		
<i>Ovis aries</i>	Sheep		
<i>Petaurus breviceps</i>	Sugar Glider		
<i>Phacolarctos cinereus</i>	Koala		
<i>Phascogale tapoatafa</i>	Brush-tailed Phascogale		
<i>Rattus fuscipes</i>	Bush Rat		
<i>Rattus lutreolus</i>	Swamp Rat	<i>Rattus lutreolus</i>	Swamp Rat
<i>Rattus rattus</i>	Black Rat		
<i>Tachyglossus aculeatus</i>	Short-beaked Echidna		
<i>Trichosurus vulpecula</i>	Common Brushtail Possum	<i>Trichosurus vulpecula</i>	Common Brushtail Possum
<i>Vulpes vulpes</i>	Red Fox		
<i>Wallabia bicolor</i>	Black wallaby	<i>Wallabia bicolor</i>	Black wallaby
<u>Bats</u>			
<i>Chalinolobus gouldii</i>	Gould's Wattled Bat		
<i>Chalinolobus morio</i>	Chocolate Wattled Bat		
<i>Miniopterus schreibersii</i>	Common Bent-wing Bat		
<i>Nyctophilus geoffroyi</i>	Lesser Long-eared Bat		
<i>Nyctophilus gouldi</i>	Gould's Long-eared Bat		
<i>Vespadelus darlingtoni</i>	Large Forest Bat		
<i>Vespadelus vulturis</i>	Little Forest Bat		
<i>Vespadelus regulus</i>	Southern Forest Bat		

A permit was obtained from Parks Victoria and DELWP to conduct the survey with infra-red sensor cameras in 2015 & 2016, as well as the installation of 10 nest boxes.

We did not proceed with the installation of the boxes, preferring to leave them in the Bear State Forest where they were continued to be monitored.

Summary of data from Mt Napier State Park fauna survey 2015-16

Table 1. Mammals and birds photographed in Mt Napier State Park fauna surveys 2015-16

Fauna species detected		Periods in 2015*							Periods in 2016#				
Scientific name	Common name	1	2	3	4	5	6	7	8	9	10	11	12
<i>Antechinus agilis</i>	Brown Antechinus	*				*			#	#	#	#	#
<i>Capra hircus</i>	Feral Goat				*	*							
<i>Dama dama</i>	Fallow Deer				*	*							
<i>Felis catus</i>	Feral Cat							*					
<i>Macropus giganteus</i>	Eastern Grey Kangaroo	*	*	*		*	*	*					#
<i>Macropus rufogriseus</i>	Red-necked Wallaby	*	*			*							
<i>Petaurus breviceps</i>	Sugar Glider			*	*	*			#	#	#	#	
<i>Phacolarctos cinereus</i>	Koala	*	*	*	*	*	*	*		#	#	#	#
<i>Rattus fuscipes</i>	Bush Rat		*		*	*			#	#			#
<i>Rattus rattus</i>	Black Rat	*								#	#	#	
<i>Tachyglossus aculeatus</i>	Short-beaked Echidna				*	*							
<i>Trichosurus vulpecula</i>	Common Brushtail Possum	*	*	*	*	*	*	*	#	#	#	#	#
<i>Vulpes vulpes</i>	Red Fox	*	*	*		*							
<i>Wallabia bicolor</i>	Black wallaby	*	*	*	*	*	*	*					
	Unknown	*			*	*	*		#	#	#		#
<i>Strepera versicolor</i>	Grey Currawong					*	*						
<i>Colluricincla harmonica</i>	Grey Shrike-thrush								#				
<i>Ninox novaeseelandiae</i>	Southern Boobook		*										
<i>Cormobates leucophaeus</i>	White-throated Treecreeper											#	

2015 sites included cameras set near base of trees and could therefore record echidnas and other fauna.

2016 sites had cameras all set above 1.5 m from ground to target arboreal mammals.

* 2015– Period 1 (21Mar-30Apr), 2 (-26 May), 3 (-27Jun), 4 (-21Jul), 5 (-22Sep), 6 (-24Nov), 7 (-23 Feb16)

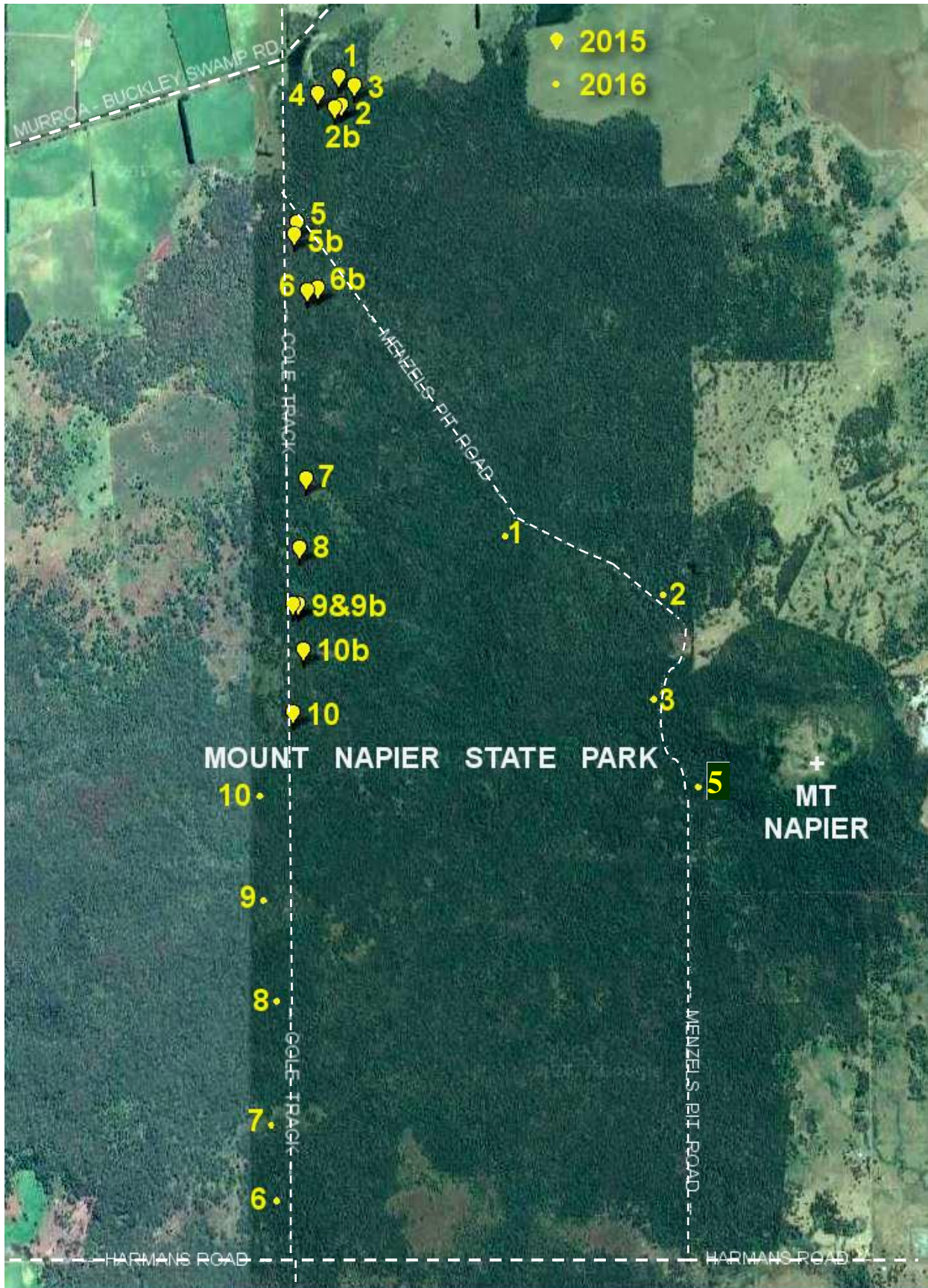
2016– Period 8 (19Mar-5May), 9 (-25Jun), 10 (-7Sep), 11 (-9Nov), 12 (-3Jan17)

The data obtained from this project indicates the following points:

- Common Brushtail Possums accounted for the major number of photos. They were recorded in every period and were most persistent around the bait stations.
- Red-necked Wallabies were recorded – they were first seen here in 2007.
- Black Wallabies were very common.
- Sugar Gliders were quite common, as were Agile Antechinus, Bush Rats and Koala.
- Fallow Deer were recorded here for the first time.
- Feral Goats were photographed and also seen along Cole Track. The numbers of this pest were reduced by shooting in 2014 but failure to follow up has resulted in the numbers increasing.
- The Red Fox was conspicuous as were Black Rats and a Feral Cat was also recorded.
- Less common was the recording of Echidna and Eastern Grey Kangaroo.
- The birds were incidental records and were not seen inspecting the bait containers.
- No evidence was found for the presences of Spot-tailed Quoll, Brush-tailed Phascogale, Yellow-footed Antechinus, Eastern Pigmy Possum, Feathertail Glider, Yellow-bellied Glider, Common Ringtail Possum or Potoroo.
- Species recorded in the past but not his time included Dusky Antechinus (*Antechinus swainsonii*) and Swamp Rat (*Rattus lutreolus*) – both species are unlikely to frequent the situations where we placed our cameras.

The Installation Reports for the 2 phases of assessment and the 12 Period Reports are presented below. This includes many photos to show the habitat and the fauna that were recorded.

The map shows the sites in Mt Napier State Park where cameras were installed in 2015 and 2016.



HFNC Mt Napier State Park fauna survey camera installation, March 2015

Saturday 21 March 2015 was devoted to the setting up of 10 “remote” infra-red sensor cameras at those sites, with Rod, Reto & Yvonne, Dave & Lyn, Ken & Janeen, John & Glenys and Hillary in the party. Rod had scouted the route in the previous weekend. The main area was the forest in the NW corner, east of Menzel’s track at Murroa Corner and along Cole Track as far as the E-W stone fence. The sites varied from tall Manna Gum (*E. viminalis*)/Blackwood (*A. melanoxylon*) forest to deep bracken and open grassy woodland.

The forest contains Manna Gum as the sole eucalypt, with Blackwood, Tree Everlasting (*Ozothamnus ferrugineus*) and Cherry Ballart (*Exocarpos cupressiformis*) as the dominant tall vegetation. There are some Sweet Bursaria (*Bursaria spinosa*) and a few *Myoporum viscosum* (Sticky Boobialla) and (in very few places) Black Wattles (*A. mearnsii*) as the only other taller vegetation. Austral Bracken (*Pteridium esculentum*) is the principal understorey flora, with Silver Tussock (*Poa labillardierei*) in rocky barriers.

The camera equipment and set-up

Five ScoutGuard IR Model SG550V and 5 Model SG550V-31B infra-red cameras were available. These were installed on a suitable tree at one of 3 positions:

1. approximately 1.3 m from the ground, with the lens directed to a lure placed near the base of another tree from 1.5 to 3 m distant. This is intended to attract ground-dwelling fauna
2. approximately 0.5 m from the ground, 1.5-2 m distant from another tree where the lure is placed at the butt from 20 cm to 40 cm from the ground
3. approximately 2.3 m from the ground and directed at a lures placed on the trunk of an adjacent tree 2-3 m distant and at about the same level as the camera. This is intended to attract fauna that have climbing ability or a propensity to avoid near-ground situations.

The lures are of 2 types, both placed together in separate containers.

1. An odorous mixture of oils (linseed 79%, pistachio 20% and vanilla essence 1%) placed in plastic containers with holes in the sides to release the odour.
2. A 50/50 mixture of peanut butter and molasses or golden syrup – placed in a metal tea-strainer

The cameras were set to fire 3 shots in rapid succession when activated by movement (the sensor was set at ‘normal’, to avoid too many false shots due to movement of foliage). The interval before the camera could fire again was set at 3 minutes. The hours during the day when the camera was permitted to operate was 3 pm to 10 am daily. The daylight photos are in colour but the night flash photos are grey-scale. The resolution of the photos was set at 5 mpix (the highest available setting) and 2 mbyte SD cards were used in the cameras. Eight AA batteries were required for each camera.

A permit was required from DELWP and a Volunteer permit was required from Parks Victoria to conduct this project. A list of volunteers attending at each visit is to be returned to PV.

Installation Sites

Site 1.

Track stop – 0.4 km from Murroa Corner on loop east past Old Crusher.

Camera site – ~ 40 m east @ GPS Aust84, 37-51-39.3/142-01-34.4. Camera set at 1.5 m height and lure 30 cm from the base of an opposite tree.

Habitat – Manna Gum & Cherry Ballart with bracken amongst lava stone.

Site 2.

Track stop – 0.6 km from Murroa Corner, at intersection with an E-W track back to Menzels Track.

Camera site – ~20 m south of track at base of the rise, @ 37-51-44.5.9/142-01-34.9. Camera set at 1.3 m and lure near the foot of a tree 2 m distant. This camera was shifted on 5 July (following the theft of a camera at Site 10 that was also too near a track) to a spot a little further away (37-51-45.3/142-01-33.6).

Habitat – Dense bracken and Manna Gum

Site 3.

Track stop – ~100 m east along E-W track to a cut log, then north ~100 m to tall Manna Gums.

Camera site – ~ Large old gums, @ 37-51-41.2/142-01-38.2. Camera set at 1.5 m on a small tree and the lure set at 2.3 m on the huge Manna Gum 3 m distant.

Habitat – open, almost bare understorey and very large, tall Manna Gum and some Blackwood.

Site 4.

Track stop – 0.7 km from Murroa Cnr on E-W track to Menzels Track, near a very large old log,
 Camera site – ~ 30 m N, @ 37-51-42.6/142-01-29.4. Camera set 1.5 m on a small tree and the lure set at 2.3 m on a larger tree 1.5 m distant.
 Habitat – open bracken, Manna Gum, Cherry Ballart and stone.

Site 5.

Track stop – 1.6 km on Cole Tk, just before the jump up.
 Camera site – ~ 80 m east along the base of the barrier, @ 37-52-06.8/142-01-24.4. Camera set at 0.6 m on one tree and the lure near the base of a tree 2 m distant. The camera was shifted on 5 July near a Cherry Ballart on the top of the barrier in order to make it less conspicuous (37-52-08.8/142-01-23.8).
 Habitat – open, almost bare understorey and very large, tall Manna Gum and some Blackwood.

Site 6.

Track stop – 2.0 km on Cole Tk, near trail in to old quarry.
 Camera site – ~ 60 m east of quarry, @ 37-52-19.3/142-01-27.0. Camera set at 1.5 m on one tree and the lure set at 2.3 m on a large tree 2.5 m distant. The camera was repositioned on 7 July to a spot further north, at 37-52-19/142-01-29.5.
 Habitat – Big trees and moderately dense bracken and stone.

Site 7.

Track stop – 3.1 km on Cole Tk, near a v. large Manna Gum on west side.
 Camera site – ~ 100 m east @ 37-52-54.4/142-01-26.8. Camera set at 1.5 m on one tree and the lure set near the base of another tree 2 m distant
 Habitat – Tall Manna Gum and moderately dense bracken

Site 8.

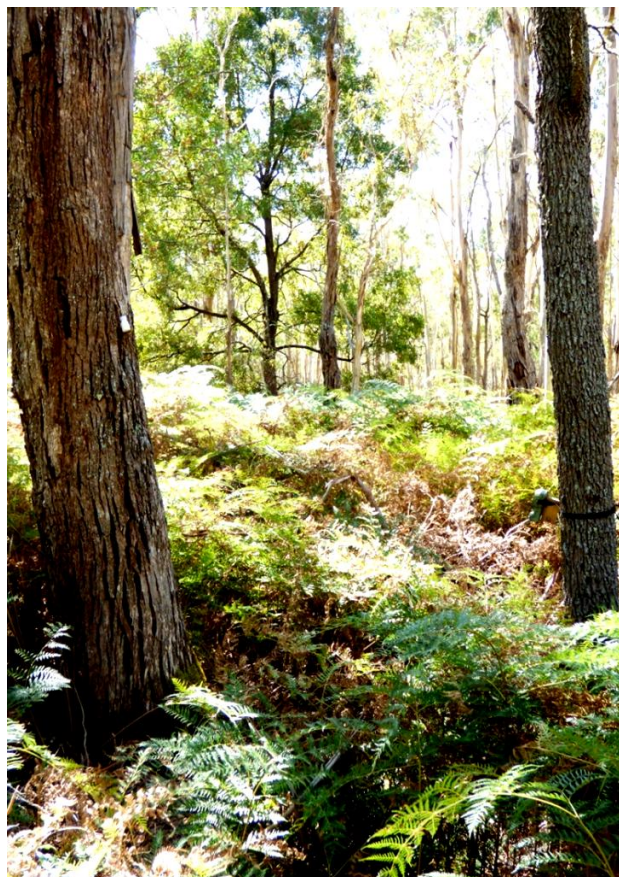
Track stop – 3.6 km on Cole Tk, off a fire parking bay on east side.
 Camera site – ~ 90 m east of track @ 37-53-07.5/142-01-25.1. Camera set at 1 m on one tree and the lure set 0.5 m from the base of another tree 2 m distant.
 Habitat – Tall Manna Gum and moderately dense bracken

Site 9.

Track stop – 3.9 km on Cole Tk, off a fire parking bay on east side.
 Camera site – ~ 20 m back along track to the swale, then ~20 m east, @ 37-53-18.0/142-01-23.7. Some clearing of bracken was needed here to prevent firing of the camera due to wind. Camera set at 1.3 m on one tree and the lure set at the base of another 2 m distant. This camera was repositioned further east from the track on 5 July to 37-53-17.8/142-01-25.0 and the lure set 1.5 m up a tree.
 Habitat – medium sized Manna Gum and dense, tall bracken near barrier stone

Site 10.

Track stop – 4.4 km on Cole Tk just past the E-W stone fence, in open ground
 Camera site – ~ 50 m south along Cole Tk to 10 m past a cut tree stump, then east ~20 m, @ 37-53-38.2/142-01-23.6. Camera set up at 1.5 m on one tree and lure set at 2.3 m on another tree 2.5 m distant.
 Habitat – medium sized Manna Gum and dense, tall bracken near barrier stone



Camera and lure set up at Site 10.

This camera was stolen in May-June and a replacement was repositioned at 4.1 km on Cole Track, on a barrier ~130 m NE of the track at 37-53-26.5/142-01-26.2, with the lure 2 m up a tree.

HFNC MT NAPIER FAUNA SURVEY Report 21 Mar-30 Apr 2015

Cameras were checked on 10 sites in the Mt Napier State Park on 30 April 2015 (40-day period of survey).

The photo results from all sites, each supplied with an odorous attractant and a peanut butter attractant placed in on trees, are presented in the table below.

Data in brackets () indicate possible number of different individuals photographed, based on the number of animals seen in each photo and the number of clusters of sightings on different days. The () numbers reported are probably much too high, since the same animal may be returning.

Remote Camera Fauna Survey at Mt Napier SP 21 Mar-30 Apr 2015										
Site Number	1	2	3	4	5	6	7	8	9	10
Km from Murroa Cnr	0.4	0.6	0.6	0.7	1.6	2.0	3.1	3.5	3.9	4.4
SD Card No.	1	2	3	4	5	6	7	8	9	10
Camera No.	1	2	3	4	5	6	7	8	9	10
Species recorded	Numbers of photos of fauna recorded at each site									
Eastern Grey Kangaroo	3(1)				4(3)		36(2-10)		6(2)	
Black Wallaby	67(5-26)	4(2)			55(4-23)		103(3-23)		119(1-12)	
Red-necked Wallaby							24(1-5)			
Brush-tail Possum	3(2)				9(2)	21(1)	32(2-8)		83(2-9)	3(1)
Koala		1(1)					3(2)	3(1)	9(1-3)	
Antechinus sp?								24(1-3)		
Red Fox	7(1-2)				2(1)		32(1-10)		13(1-3)	
Black Rat										3(1)
Unknown mammal		3						1	1	
No of Species recorded	4	3	0	0	4	1	6	2	5	2
Total photos recorded	115	27	2	0	103	60	339	51	258	29
Total No. photos of fauna	80	6	0	0	70	21	230	27	230	6

Notes:

Site 1 – 6 photo night white-outs and 1 black-out. Black Wallaby (*Wallabia bicolor*) photos on 19 days (21/3-21/4), Red Fox (*Vulpes vulpes*) seen on 2 days (29-30/3), Common Brushtail Possum (*Trichosurus vulpecula*) seen on 2 days (16 7 18/4) and Eastern Grey Kangaroo (*Macropus giganteus*) on 1 day (17/4).

Site 2 – Koala (*Phascolarctos cinereus*) seen on 1 day (7/4), Black Wallaby on 2 days (8/4 & 22/4) & unknown mammal (fur) on 22/4.

Site 3 – no photos; this camera either failed to function or no animals were present at the site.

Site 4 – no photos; camera did not appear to be working.

Site 5 – Eastern Grey Kangaroo were seen on 2 occasions (22/3 & 26/4), Black Wallaby on 14 days (22/3-27/4), Common Brush-tail Possum on 1 day (24/3), Red Fox on 1 day (9/4) and 2 unknown (fur) on 3/4 & 15/4. There were 3 night photo white-outs & 15 pinkish daylight photos. Scent lure container taken; replaced. The Peanut Butter/Golden Syrup strainer was empty; refilled.

Site 6 – Common Brushtail Possum was seen on 1 day only (23/3). Scent lure container taken; replaced. Peanut Butter strainer empty; refilled

Site 7 – Red Fox was seen on 10 days (22/3-06/4), Black Wallaby on 14 days (22/3-17/4), Common Brushtail Possum on 5 days (23/3-30/3), Eastern Grey Kangaroo on 8 days (23/3-16/4), Red-necked Wallaby (*Macropus rufogriseus*) on 4 days (25/3-17/4) and Koala on 2 days (29/3 & 17/4). Camera alignment was disturbed on 28/3 for a short period. Scent lure container taken; replaced. Peanut Butter/Golden Syrup strainer was empty; refilled

Site 8 – Brown Antechinus (*Antechinus agilis*) was photographed on 6 days (23/3-06/4, Koala on 1 day (12/4) and an unknown mammal fur on 12/4. The scent lure container was missing; replaced. Detail of Antechinus was not sharp.

Site 9 – Black Wallaby seen on 10 days (22/3-27/4), Eastern Grey Kangaroo on 2 days (31/3 & 24/4), Koala on 3 days (05/4-26/4)4, Common Brushtail Possum on 5 days (18/4-28/4) and Red Fox on 5 days (06/4-25/4). The scent container had been taken; replaced. Peanut Butter strainer empty; refilled.

Site 10 – Common Brushtail Possum was seen on 22/3 and Black Rat (*Rattus rattus*) on 22/3. The camera alignment was disturbed on 3/4 for short period. Scent lure container was missing; replaced. Peanut Butter strainer topped up. Detail of Black Rat on tree trunk was not sharp.

Wind and fauna causing movement in bracken probably created most of the photos with no animals in view. Two Koala and a Black Wallaby were seen during the tour of sites on 30 April.

Selected photos

Except in the first image below, the white lure containers are 70 mm in height and that may help the estimation of size in fauna seen adjacent to the container.



Eastern Grey Kangaroo Mt Nap Site 1, Apr15 092



Black Wallaby Mt Nap Site 5, Apr15 077



Common Brushtail Possum Mt Nap Site 6, Apr15 050



Red-necked Wallaby Mt Nap Site 7, Apr15 095



Red Fox Mt Nap Site 7, Apr15 158



Koala Mt Nap Site 9, Apr15 250



rd

Antechinus agilis Mt Nap Site 8, Apr15 033



03.23.2015 :

Antechinus agilis Mt Nap Site 8, Apr15 003



Black Rat Mt Nap Site 10, Apr15 009



Black Rat Mt Nap Site 10, Apr15 008



04.12.2015 17:12:

Black Wallaby Mt Nap Site 7, Apr15 262



04.06.2015 02:29

Red Fox Mt Nap Site 7, Apr15 215

HFNC MT NAPIER FAUNA SURVEY Report 30 April-26 May 2015

Cameras were checked on 10 sites in the Mt Napier State Park on 26 May 2015 (26-day survey period).

The photo results from all sites, each supplied with an odorous oil and a peanut butter attractant placed in separate containers on trees, are presented in the table below.

Data in brackets () indicate possible number of different individuals photographed, based on the number of animals seen in each photo and the number of clusters of sightings on different days. The () numbers of individual animals reported will mostly be too high, since the same animal may be returning.

Remote Camera Fauna Survey at Mt Napier SP, 30 Apr-26 May 2015										
Site Number	1	2	3	4	5	6	7	8	9	10
Km from Murroa Cnr	0.4	0.6	0.6	0.7	1.6	2.0	3.1	3.6	3.9	4.4
SD Card No.	11	12	13	14	15	16	17	18	19	20
Camera No.	1	2	3	4	5	6	7	8	9	10
Species recorded	Photos recorded at each site									
Eastern Grey Kangaroo							6(1)			
Black Wallaby	9(4)	4(2)			15(4)		41(10)	28(6)	132(13)	
Red-necked Wallaby							36(9)			
Brush-tail Possum		1(1)					23(7)		47(7)	
Koala							3(1)	3(1)	9(3)	
Bush Rat									3(1)	
Red Fox					13(6)		24(6)		3(1)	
Southern Boobook									3(1)	
No of Species recorded	1	2	0	0	2	0	6	2	6	0
Total photos recorded	36	16	2	0	36	0	177	51	213	67
Total No. photos of fauna	9	5	0	0	28	0	133	31	197	0

Notes:

- Site 1 – Black Wallaby (*Wallabia bicolor*) was recorded on 4 days (02/5-16/5); the wire mesh container was damaged (now replaced) – the lures were repositioned higher on tree.
- Site 2 – Black Wallaby was recorded on 3 days (04/5-17/5) and Common Brushtail Possum (*Trichosurus vulpecula*) on one day (23/5). The wire mesh container was damaged (now replaced).
- Site 3 – no fauna were recorded but the camera was apparently OK.
- Site 4 – no photos; camera not working (removed for repair).
- Site 5 – Black Wallaby were seen on 6 days (01/5-22/5) and Red Fox (*Vulpes vulpes*) on 5 days (04/5-11/5). The scent container was chewed off and lost (now replaced).
- Site 6 – no photos were recorded but as both containers were damaged (now replaced) the camera was not working.
- Site 7 – Black Wallaby were recorded on 8 days (30/4-23/5), Eastern Grey Kangaroo (*Macropus giganteus*) on 2 days (01/5 & 03/5), Common Brushtail Possum on 7 days (01/5-25/5), Red-necked Wallaby (*Macropus rufogriseus*) on 7 days (02/5-25/5), Koala (*Phascolarctos cinereus*) on 1 day (25/5) and Red Fox on 6 days (03/5-23/5). The scent container was destroyed (now replaced).
- Site 8 – Black Wallaby were seen on 6 days (02/5-08/5) and Koala on 1 day (25/5). The scent container was destroyed on the first day (now replaced).
- Site 9 – Black Wallaby was seen on 10 days (01/5-24/5), Common Brushtail Possum on 8 nights (04/5-21/5), Bush Rat (*Rattus fuscipes*) on 1 day (06/5), Koala on 3 days (10/5-21/5), Red Fox on 1 day (25/3) and Southern Boobook (*Ninox novaeseelandiae*) on 1 day (30/4). The scent container was destroyed (now replaced).
- Site 10 – The scent container was destroyed (now replaced) – camera was working but there were no photos of fauna.

Selected photos

The white tablet containers are 70 mm in height and that may help the estimation of size in fauna seen adjacent to the container. The photos presented below have been manipulated and trimmed.



Black Wallaby Mt Napier SP Site 9,
May15 023



Red-necked Wallaby Mt Napier SP
Site 7, May15 172



Eastern Grey Kangaroo Mt Napier
SP Site 7, May15 054



Koala Mt Napier SP Site 9,
May15 202



Brushtail Possum Mt Napier SP
Site 9, May15 184



Red Fox Mt Napier SP Site 5,
May15 007



Southern Boobook Mt Napier SP
Site 9, May15 003



Red Fox Mt Napier SP Site 7,
May15 083 - come down!



Koala Mt Napier SP Site 8,
May15 051



05.06.2015 21:37:55

Bush Rat Mt Napier SP Site 9,
May15 143



05.06.2015 21:37:54

Bush Rat Mt Napier SP Site 9,
May15 144



KEEP GUARD

Black Wallaby Mt Napier SP Site 5,
May15 025

The rodent in the photos above appears to be *Rattus fuscipes*; this species is known to occur there and the tail length approximates to the length of the head and body, unlike *Rattus rattus* which has a much longer tail.

HFNC MT NAPIER FAUNA SURVEY Report 26 May-27 June 2015

Cameras were checked on 9 sites in the Mt Napier State Park on 27 June 2015 (32-day period of survey).

The photo results from all sites are presented in the table below. Fauna were attracted by a lure of odorous oil and a peanut butter attractant placed in separate containers on trees.

Data in brackets () indicate possible number of different individuals photographed, based on the number of animals seen in each photo and the number of clusters of sightings on different days. The () numbers of individual animals reported will mostly be too high, since the same animal may be returning.

Remote Camera Fauna Survey at Mt Napier SP 26 May-27 June 2015										
Site Number	1	2	3	4	5	6	7	8	9	10
Km from Murroa Corner	0.4	0.6	0.6	0.7	1.6	2.0	3.1	3.6	3.9	4.4
SD Card No.	1	2	3	-	5	6	7	8	9	10
Camera No.	1	2	3	-	5	6	7	8	9	10
Species recorded	Photos recorded at each site									
Eastern Grey Kangaroo				-			3(1)			
Black Wallaby		10(5)		-	16(5)		3(1)		60(12)	
Brush-tail Possum				-	3(1)			3(1)	127(14)	
Koala				-					5(2)	
Sugar Glider				-					3(1)	
Red Fox				-	6(2)				15(5)	
No. of Species recorded	0	1	0	-	3	0	2	1	5	*
Total photos recorded	0	30	0	-	33	0	6	6	237	*
Total No. photos of fauna	0	10	0	-	25	0	6	3	210	*

Notes:

Site 1 – no photos, camera apparently faulty (removed).

Site 2 – Black Wallaby (*Wallabia bicolor*) found on 5 days (02/6-23/6)

Sites 3 & 6 – no photos, camera apparently faulty (removed).

Site 4 – no camera at this site (removed last period)

Site 5 – Black Wallaby seen on 5 days (27/5-18/6), Common Brushtail Possum (*Trichosurus vulpecula*) on 1 day (27/5) and Red Fox (*Vulpes vulpes*) on 2 days (31/5 & 26/6).

Site 7 – Eastern Grey Kangaroo (*Macropus giganteus*) was seen on 27/5 and Black Wallaby on 28/5.

Site 8 – Common Brushtail Possum was seen on 28/5.

Site 9 – A Sugar Glider (*Petaurus breviceps*) was seen at the base of the tree (first record this survey), Black Wallaby on 7 days (26/5-25/6), Common Brushtail Possum on 12 days (27/5-24/6), Koala (*Phascolarctos cinereus*) on 2 days (13/6 & 24/6) and Red Fox on 4 days (30/5-20/6).

Site 10 – camera stolen (*); may not have been working.

Selected photos

The white tablet containers are 70 mm in height and that may help the estimation of size in fauna seen adjacent to the container. The photos presented below have been manipulated and trimmed.



Black Wallaby Mt Napier SP Site 5, June 15



Red Fox Mt Napier Site 5, 27Jun15

6.26.2015 6:00



6.23.2015 17:55:18

Black Wallaby Mt Napier SP Site 7, June 15



Black Wallaby Mt Napier Site 2, Jun15



Brushtail Possum Mt Napier Site 5, Jun15



Brushtail Possum Mt Napier SP Site 8, June15



Koala Mt Napier SP Site 9, June15



Red Fox Mt Napier SP Site 9, June15



Sugar Glider Mt Napier SP Site 9, June15



Sugar Glider Mt Napier SP Site 9, June15



Eastern Grey Kangaroo Mt Napier SP Site 7, June15

HFNC MT NAPIER FAUNA SURVEY Report 27 June-21 July 2015

Cameras were checked on 7 sites in the Mt Napier State Park on 21 July 2015 (24 days or 14-day period of survey). The cameras are now set to take 5 mpix photos any time day or night when triggered by motion, firing 3 shots at 1-2 sec intervals then a 3-minute gap before the sequence can be repeated.

The photo results from all sites are presented in the table below. Fauna were attracted by a lure of odorous oil and a peanut butter/molasses attractant placed in separate containers on trees.

Data in brackets () indicate possible range in number of different individuals photographed, based on the number of animals seen in each photo and the number of clusters of sightings on different days. The upper range of individual animals reported will mostly be too high, since the same animal may return.

Remote Camera Fauna Survey at Mt Napier SP, 27 June-21 July 2015										
Site Number	1	2	3	4	5	6	7	8	9	10
Km from Murroa Corner	0.4	0.6	0.6	0.7	1.6	2.0	3.1	3.6	3.9	4.4
SD Card No.	11	12	-	-	15	16	17	18	19	
Camera No.	1	2	-	-	5	6	7	8	9	
Species recorded	Photos recorded at each site									
Black Wallaby	195(2-24)	2(1)			24(1-7)				64(2-9)	
Brush-tail Possum	12(1-4)				2(1)	13(1)	3(1)		44(5)	
Koala	1(1)				3(1)				3(1)	
Bush Rat	3(1)									
Sugar Glider						269(1-22)				
Echidna									16(1-6)	
Fallow Deer							3(1)			
Feral Goat							3(1)			
No. of Species recorded	4	1			3	2	3	0	4	
Total photos recorded	239	21			40	318	9	0	150	
No. photos of fauna	211	2			29	281	9	0	127	

Site 1 – Black Wallaby (*Wallabia bicolor*) seen on 13 days (08/7-21/7), Common Brushtail Possum (*Trichosurus vulpecula*) on 4 days (09/7-21/7), Koala (*Phascolarctos cinereus*) on 18/7 and Bush Rat (*Rattus fuscipes*) on 13/7. Repaired camera was repositioned on 7 July.

Site 2 – Black Wallaby seen on 30/6. The camera was repositioned on 5 July to 37-51-45.3/142-01-33.6 (with bait at 1.5 m).

Sites 3, 4 & 10 – no camera at these sites (2 cameras being repaired and one was stolen in May-June).

Site 5 – Black Wallaby seen on 5 days (01/7-13/7), Common Brushtail Possum on 03/7, Koala on 09/7 and Unknown (fur) on 2 days (01/7 & 06/7). Camera repositioned here 5 July (37-52-08.8/142-01-23.8), bait near base.

Site 6 – Common Brushtail Possum seen on 18/7, Sugar Glider (*Petaurus breviceps*) on 10 days (09/7-21/7, with one set of images at 4 pm on 19/7), Unknown (fur) on 3 days (17/7-19/7). This repaired camera was repositioned on 7 July (37-52-19.0/142-01-29.5), with bait 2 m up the tree.

Site 7 – Common Brushtail Possum was seen on 28/7, Feral Goat (*Capra hircus*) and Fallow Deer (*Dama dama*) on 29/6.

Site 9 – Black Wallaby were seen on 9 days (27/6-20/7), Echidna (*Tachyglossus aculeata*) on 4 days (28/6-20/7), Koala on 30/6 and Common Brushtail Possum on 6 days (01/7-14/7). This camera was repositioned on 5 July (37-53-17.8/142-01-25.0), bait 1.5 m up tree.



Short-beaked Echidna Mt Napier SP Site 5, Jul15



Koala Mt Napier SP Site 5, Jul15



Black Wallaby Mt Napier SP Site 1, Jul15



Bush Rat Mt Napier SP Site 1, Jul15



Bush Rat Mt Napier SP Site 1, Jul15



Sugar Glider Mt Napier SP Site 6, Jul15



Feral Goat Mt Napier SP Site 7, Jul15



Sugar Glider Mt Napier SP Site 6, Jul15



Brushtail Possum Mt Napier SP Site 9, Jul15



Fallow Deer Mt Napier SP Site 7, Jul15

HFNC MT NAPIER FAUNA SURVEY Report 21 July 15-22 September 2015

Cameras were checked on 8 sites in the Mt Napier State Park on 28 Sept. (63 days survey for most cameras or 53 days for Camera 10). Cameras 1-9 are now set to take 5 mpix photos day or night when triggered by motion, with 3 shots ~1 sec apart then a 3-minute gap before the sequence can be repeated. Scoutguard Camera 10 (replacement camera) was set at 12 mpix and a gap sequence of ≥ 1 min.

The photo results from all sites are presented in the table below. Fauna were attracted by a lure of odorous oil and a peanut butter/molasses attractant placed in separate containers on trees.

Data in brackets () indicate possible range in number of different individuals photographed, based on the number of animals seen in each photo and the number of clusters of sightings on different days. The upper range of individual animals reported will mostly be too high, since the same animal may return.

Remote Camera Fauna Survey at Mt Napier SP, 21 Jul.-22 Sep. 2015										
Site Number	1	2	3	4	5	6	7	8	9	10
Km from Murroa Corner	0.4	0.6	0.6	0.7	1.6	2.0	3.1	3.6	3.9	4.1
SD Card No. in Jul	11	12	-	-	15	16	17	18	19	N*
Camera No.	1	2	-	-	5	6	7	8	9	10*
Species recorded	Photos recorded at each site									
Black Wallaby	329(2-89)	13(1-5)			59(2-18)		68(3-20)	6(1-2)	102(1-21)	
Red-necked Wallaby							33(1-9)			
Eastern Grey Kangaroo							57(1-16)	4(1-2)		
Brushtail Possum	131(2-50)						11(1-4)	6(1-2)	20(1-5)	
Koala	16(1-8)					11(1-3)			53(1-19)	
Bush Rat	3(1)					3(1)		3(1)		
Brown Antechinus						3(1)				
Sugar Glider		4(2)				118(1-20)				
Echidna	8(1-3)								6(1-2)	
Feral Goat								1(1)		
Feral deer							12(1-2)			
Red Fox							6(1-2)			
Grey Currawong	5(1-2)									
Unknown mammal	1	2			6		1		1	
No. of Species recorded	6	2	-	-	3	4	6	5	4	0
Total photos recorded	673	67	-	-	94	193	304	34	912	205
No. photos of fauna	492	17	-	-	59	134	187	20	181	0

Site 1 – GPS 37-51-39.3/142-01-34.4). Black Wallaby (*Wallabia bicolor*) seen on 43 days (22/7-21/9), Common Brushtail Possum (*Trichosurus vulpecula*) on 27 days (22/7-14/9), Bush Rat (*Rattus fuscipes*) on 26/7, Koala (*Phascolarctus cinereus*) on 6 days (04/8-16/9), Short-beaked Echidna (*Tachyglossus aculeatus*) on 2 days (31/7 & 10/9) and Grey Currawong (*Strepera versicolour*) on 2 days (27/8 & 21/9).

Site 2 – Black Wallaby were seen on 5 days (21/7-13/8) and Sugar Glider (*Petaurus breviceps*) on 2 days (22/7 & 28/7). An unknown mammal (fur) was probably a Koala straddling the camera.

Sites 3 & site 4 – no camera at these sites (cameras being repaired).

Site 5 – Black Wallaby was seen on 12 days (22/7-20/9) and unknown animal on 4 days (02/8-12/9).

Site 6 – Sugar Glider was seen on 9 days (21/7-07/9), Agile Antechinus (*Antechinus agilis*) on 22/7, Bush Rat on 22/7 and unknown animal (probably possum) on 3 days (27/8-22/9).

Site 7 – Fallow Deer (*Dama dama*) were seen on 2 days (24/7 & 30/8) a first for Mt Napier. Other species were Red-necked Wallaby (*Macropus rufogriseus*) on 12 days (23/7-19/9), Eastern Grey Kangaroo (*M. giganteus*) on 6 days (22/7-10/9), Black Wallaby on 26 days (25/7-22/9), Red Fox on 2 days (18/8 & 09/9), Common Brushtail Possum on 5 days (27/7-19/9). GPS 37-52-54.4/142-01-26.8.

Site 8 – Black Wallaby was seen on 2 days (24/7 & 26/7), Common Brushtail Possum on 18/8, Bush Rat on 25/7, Eastern Grey Kangaroo on 26/7 and Feral Goat on 31/7.

Site 9 – Black Wallaby was seen on 18 days (22/7-06/9), Common Brushtail Possum on 6 days (30/7-28/8), Koala on 12 days (22/7-24/8) & Echidna on 2 days (30/7 & 03/8). GPS 37-53-17.8/142-01-25.0.

Site 10* – new camera 31 Jul (37-53-26.5/142-01-26.2); bait 2 m off ground ~130 m NE from Tk at 4.1 km. This camera was triggered by movement of leaves beyond the target; no fauna detected.



Black Wallaby, Mt Napier SP Site 1, Sep15



Common Brushtail Possum, Mt Napier SP Site 1, Sep15



Koala, Mt Napier SP Site 9, Sep15



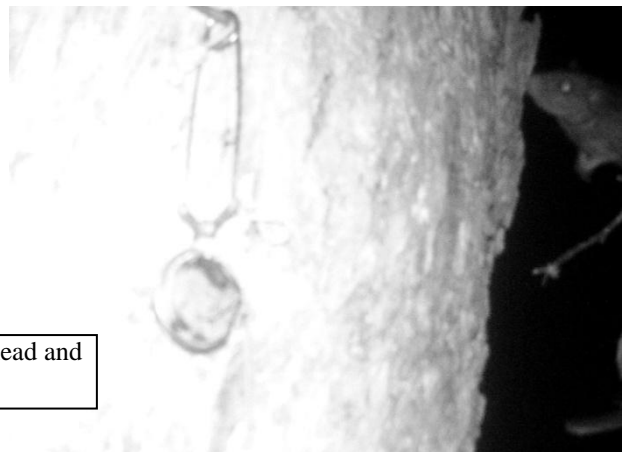
Short-beaked Echidna, Mt Napier SP Site 5, Sep15



Bush Rat, Mt Napier SP Site 1, Sep15



Bush Rat, Mt Napier SP Site 1, Sep15



Bush Rat? Mt Napier SP Site 1, Sep15 (head and tip of tail visible)



8.27.2015 11:51:48

Grey Currawong, Mt Napier SP Site 1, Sep15



8.09.2015 23:20:59

Sugar Glider, Mt Napier SP Site 2, Sep15



8.03.2015 18:55:37

Sugar Glider, Mt Napier SP Site 2, Sep15 – a second animal



7.30.2015 6:28:19

Black Wallaby, Mt Napier SP Site 5, Sep15



07.24.2015 03:32:57

Sugar Glider, Mt Napier SP Site 6, Sep15



07.22.2015 05:27:36



07.22.2015 03:06:05



07.22.2015 03:06:06

Brown Antechinus, Mt Napier SP Site 6, Sep15



ScoutGuard

08.15.2015 18:04:49



08.22.2015 17:52:22

Red-necked Wallaby, Mt Napier SP Site 7, Sep15



08.29.2015 18:22:20

Eastern Grey Kangaroo, Mt Napier SP Site 7, Sep15



ScoutGuard

07.24.2015 09:49:41

Fallow Deer, Mt Napier SP Site 7, Sep15

Common Brushtail Possum, Mt Napier SP Site 7, Sep15



08.01.2015 21:59:24



08.18.2015 08:03:44



09.09.2015 20:56:06

Red Fox, Mt Napier SP Site 7, Sep15



ScoutGuard

08.22.2015 18:29:47

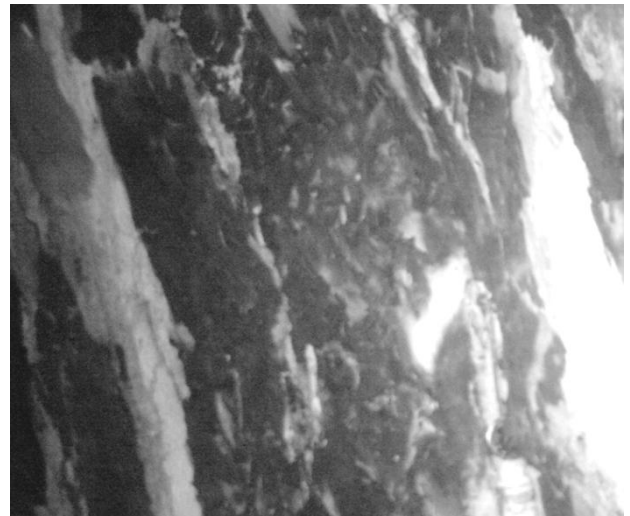
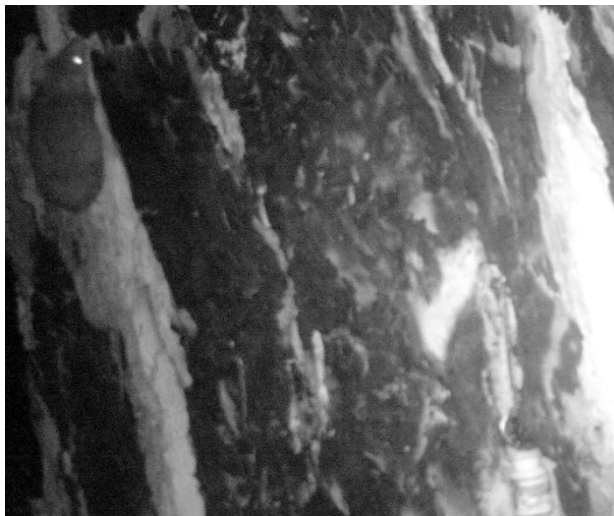
Black Wallaby, Mt Napier SP Site 8, Sep15



ScoutGuard

07.31.2015 13:13:52

Feral Goat, Mt Napier SP Site 8, Sep15



Bush Rat, Mt Napier SP Site 8, Sep15



07.30.2015 13:42:11

Short-beaked Echidna, Mt Napier SP Site 9, Sep15



07.26.2015 21:16:08

Koala, Napier SP Site 9, Sep15

HFNC MT NAPIER FAUNA SURVEY Report 22 Sept.-24 Nov. 2015

Cameras were checked on 8 sites in the Mt Napier State Park on Tues 24 Nov. 2015. Cameras 1-9 are now set to take 5 mpix photos day or night when triggered by motion, with 3 shots ~1 sec apart then a 1-minute gap before the sequence can be repeated. ScoutGard Camera 10 (Digital Scouting Camera SG550-12mHD replacement for stolen camera) was set at 12 mpix and a gap sequence of 1 min. All cameras are checked to ensure that the blinking red light comes on when the setup is complete and camera switch is turned on.

The photo results from all sites are presented in the table below. Fauna were attracted by a lure of odorous oil and a peanut butter/molasses or golden syrup attractant placed in separate containers on trees.

Data in brackets () indicate possible range in number of different individuals photographed, based on the number of animals seen in each photo and the number of clusters of sightings on different days. The upper range of individual animals reported will mostly be too high, since the same animal may be returning.

Remote Camera Fauna Survey at Mt Napier SP, 22 Sept.-24 Nov. 2015										
Site Number	1	2	3	4	5	6	7	8	9	10
Km from Murroa Corner	0.4	0.6	0.6	0.7	1.6	2.0	3.1	3.6	3.9	4.1
SD Card No. in Sep	11	12	-	-	15	16	17	18	19	20
Camera No.	1	2	-	-	5	6	7	8	9	10
Species recorded	Photos recorded at each site									
Black Wallaby	665(7-111)		-	-	11(1-3)		6(1)			
Eastern Grey Kangaroo	10(1-4)		-	-	3(1)					
Brush-tail Possum	79(2-32)		-	-		6(1-2)	3(1)			
Koala	15(2-8)		-	-						
Unidentified	1									2
Grey Currawong	3(1)		-	-						
No. of Species recorded	5	0	-	-	2	1	2	0	0	1
Total photos recorded	1197	3	-	-	510	45	18	0	0	72*
No. photos of fauna	772	0	-	-	14	6	9	0	0	1
No. photos with no fauna	425	3	-	-	496	39	9	0	0	71

Notes:

Site 1 – Black Wallaby (*Wallabia bicolor*) were seen on 54 days (22/9-24/11), Common Brushtail Possum (*Trichosurus vulpecula*) on 21 days (22/9-08/11), Koala (*Phascolarctus cinereus*) on 8 days (23/9-17/11), Eastern Grey Kangaroo (*Macropus giganteus*) on 26/11 and Grey Currawong (*Strepera versicolor*) on 25/9. Bracken had grown strongly and its movement triggered many shots. There were also 72 unexplained 'black' shots.

Site 2 – Three site photos were recorded at switch-on but none thereafter.

Site 3 & Site 4 – no cameras at these sites (cameras being repaired).

Site 5 – Black Wallaby were seen on 3 days (27/9-09/10) and Eastern Grey Kangaroo on 29/9. The camera recorded mostly faded pink photos or blanks. Thistles had also swamped this site.

Site 6 – Common Brushtail Possums were seen on 2 days (04/10 & 07/11). The suspended lure container was seen to blow in the breeze and that probably initiated the majority of photos.

Site 7 – A Black Wallaby was seen on 24/9 and a Common Brushtail Possum on 23/9.

Site 8 – Camera failed to function – discoloured wetness found on base of one battery and terminal.

Site 9 – No explanation for failure of camera to record – the lure containers had been chewed.

Site 10 – Fauna was detected only in 2 photos, one on 27/09 just a blur of fur and the other of a small animal apparently close to the lens showing a blurred tail. *For this period the camera had inadvertently been set to take a video clip after each photo. One distorted image appears to show a small animal with what might have been a tail, but not similar to that of a phascogale. The video also shows that movement of foliage has activated the camera on all other images. The camera was reset to take photos only.

The results from the months mid-September to mid-November were rather poor, partly due to camera failures and growth of bracken and/or thistles that interfered with the performance of the camera.

However, compared with previous periods, there were fewer species recorded with the cameras that functioned well – no Sugar Glider, Echidna, Red-necked Wallaby, Bush Rat, Antechinus, goat or deer.

A ‘white’ Koala was photographed here, another was seen 3.5 km away at Site 9 in July-September.



Grey Kangaroo, Site 1, Nov15



Black Wallaby, Site 1, Nov15



Brushtail Possum, Site 1, Nov15



Grey Currawong, Site 1, Nov15



Koala, Site 1 Nov15



Koala, Site 1 Nov15



Black Wallaby, Site 5, Nov15



Grey Kangaroo, Site 5, Nov15



Brushtail Possum, Site 7, Nov15



Brushtail Possum, Site 6, Nov15



Black Wallaby, Site 7, Nov15



Unidentified, Site 10, Nov15

HFNC MT NAPIER FAUNA SURVEY Report 24 Nov. 2015-23 Feb. 2016

Cameras were removed from 9 sites in the Mt Napier State Park on Tues 23 Feb. 2016. Cameras 1-9 were set to take 5 mpix photos day or night when triggered by motion, with 3 shots ~1 sec apart then a 1-minute gap before the sequence can be repeated. ScoutGard Camera 10 (Digital Scouting Camera SG550-12mHD) was set at 12 mpix, with a gap sequence of 1 min.

The photo results from all sites are presented in the table. Fauna were attracted by a lure of odorous oil and a peanut butter/molasses or golden syrup attractant placed in separate containers on a tree nearby.

Data in brackets () indicate possible range in number of different individuals photographed, based on the number of animals seen in each photo and the number of clusters of sightings at different times. The upper range of individual animals reported will mostly be too high, since the same animals may return.

Remote Camera Fauna Survey at Mt Napier SP 24Nov. 2015-23 Feb 2016										
Site Number	1	2	3	4	5	6	7	8	9	10
Km from Murroa Corner	0.4	0.6	0.6	0.7	1.6	2.0	3.1	3.6	3.9	4.1
SD Card No. in Nov	01	02	03	-	05	06	07	08	09	10
Camera No.	1	2	3	-	5	6	7	8	9	10
Species recorded	Photos recorded at each site									
Black Wallaby	508(5-100)						12(1-4)		159(2-20)	
Eastern Grey Kangaroo							9(1-2)			
Brush-tail Possum	61 (2-25)	50(2-12)					93(2-19)			
Koala	15(1-7)									3(1)
Feral Cat	4(1)									
Unknown animal										4(1-3)
No. of Species recorded	4	1	0		0	0	3	0	1	1
Total photos recorded	939	72	0		0	27	183	15	303	907
No. photos of fauna	587	50	0		0	0	114	0	159	7
No. photos with no fauna	352	22	0		0	27	69	15	144	900

Notes:

- Site 1 – Black Wallaby (*Wallabia bicolor*) were seen 43 days (25/11-28/12), Common Brushtail Possums (*Trichosurus vulpecula*) on 13 days (24/11-31/12), Koala (*Phascolarctus cinereus*) on 7 days (24/11-20/1) and Feral Cat (*Felis catus*) on 2 days (15/12 & 07/1). There were some unexplained ‘black’ shots and many ‘blanks’. Last photo was on 5 Feb. Four Eveready batteries were low (<0.1V) and the Energisers had >0.8V.
- Site 2 – Common Brushtail Possums were recorded on 10 days (27/11-17/12). Batteries had >0.7 V.
- Site 3 – Repaired camera re-installed 24 Nov. but SD card missing in February (believed stolen).
- Site 4 – No camera at this site (camera inoperative).
- Site 5 – No photos were recorded. The ‘door’ was off the camera. A party had set up a temporary bush camp nearby and someone may have wiped the card.
- Site 6 – No photos of fauna recorded. There was moisture on one battery cell and all batteries were dead.
- Site 7 – Common Brushtail Possum were seen on 6 days (25/11-03/12), Eastern Grey Kangaroo (*Macropus giganteus*) on 2 days (27/11 & 29/11) and Black Wallaby on 3 days (27/11-01/12). No photos obtained after 6 December. Four of the batteries were dead.
- Site 8 – No photos of fauna, or any photos after 9 Dec. Most of the batteries were dead.
- Site 9 – Black Wallaby were recorded on 11 days (01/1-20/1). Last photo 20 December. Most of the batteries were dead and one terminal was corroded from leakage.
- Site 10 – A Koala was recorded on 25/11 and unknown animals, possibly Koala (fur seen) on 3 days (02/12-07/12). The sensitivity (set to ‘normal’) of this camera to foliage movement was excessive, resulting in many ‘blanks’. Last photo was on 17 Jan.

The results from this period of mid-Nov. to mid-Feb were very poor, with only 5 species being recorded. Eveready batteries did not perform as well as Energiser batteries, which did not leak and they held a higher charge. Some photos of animals recorded are shown below, including one of a Black Wallaby grasping a tall Austral Bracken stem (*Pteridium esculentum*) with its ‘hands’ and lopping it with its teeth.



IARD 12.11.2015 17:46:20

Black Wallaby, Site 1, Feb. 2016 – pruning bracken



KEEP GUARD 12.15.2015 18:17:10

Feral Cat, Site 1, Feb. 2016



KEEP GUARD 12.15.2015 5:53:26

Koala, Site 10, Feb. 2016



KEEP GUARD 11.29.2015 3:36:06

Brush-tail Possum, Site 1, Feb. 2016



KEEP GUARD 11.27.2015 22:29:37

Brush-tail Possum, Site 2, Feb. 2016



Guard 11.29.2015 04:28:29

Eastern Grey Kangaroo, Site 7, Feb. 2016



ScoutGuard 01.15.2009 16:06:41

Black Wallaby stoush, Site 9, Feb. 2016



2015.11.25 13:05:38

Koala, Site 1, Feb. 2016

HFNC Mt Napier State Park fauna survey camera installation, March 2016

Saturday 19 March 2016 was devoted to the setting up of “remote” infra-red sensor cameras at 9 sites, with Rod, John & Glenys Cayley, Peter Hocking, Darryl Delahoy, Roger Thompson, Reto & Yvonne in the party. Rod had scouted the route previously (13 Feb. & 6 Mar.) and marked the sites. Four goats were seen off Cole Track on the second occasion.

This was the second year of survey in the Mt Napier State Park. Information on previous fauna surveys, flora, fauna and the general camera equipment and usage was given in *HFNC Mt Napier State Park fauna survey camera installation, March 2015*.

The methods used in 2016 have varied a little from that in 2015, as follows:

- All cameras were set to fire after 1 minute from any previous action, day or night.
- Photos were set to be taken in groups of 2 (approx. 2-3 secs apart) rather than 3.
- Photo resolution set at highest possible – 5Mpix for Cameras 1-9 and 12 Mpix for Camera 10.
- An extra layer of gauze tape put over the ‘window’ of Cameras 1-9, to reduce flash intensity.
- The trigger resolution for Camera 10 was reduced to ‘low’, to prevent spurious shots from wind-moved leaves or bark. This new 12MPix camera (Model SG550-12mHD) has a wider field of view (60°) and is more sensitive to movement than older models (SG550V & SG550V-31B).
- Unlike in 2015, the lures were all set on tree trunks at 1.5-2.3 m above ground. We were looking for arboreal mammals and not the images of kangaroos, wallabies, foxes, cats, goats, deer or echidna.

This year new sites have been selected to cover different areas of the park:

- 2 sites on Menzels Pit Tk north of Menzels Pit and 2 sites south of the pit (on the track around the west base of Mt Napier towards Harmans Rd), targeting large, old Manna Gum (*Eucalyptus viminalis*) among Blackwood (*A. melanoxylon*) & Cherry Ballart (*Exocarpos cupressiformis*). The understory is mostly dense Austral Bracken (*Pteridium esculentum*).
- 5 sites along Cole Tk, south of the E-W stone fence, towards Harmans Rd. The sites varied from tall Manna Gum, Blackwood & Cherry Ballart forest with dense Austral Bracken understory, to open grassy woodland with Silver Tussock (*Poa labillardierei*) in rocky barriers. Thistles abound in most areas where bracken is sparse.

The location of sites is given in km from the Buckley Swamp-Byaduk Rd entrance (0.0 km) and from the Harmans Rd-Cole Tk junction (0.0 km). As in 2015, GPS data refers to the Aust 84 system, which gives positions approximately 200 m distant from readings taken using the WGS 92 system.

Site 1.

Track stop – 3.2 km from Murroa Cnr on Menzels Tk, near a parking bay.

Camera 1– set up ~100 m W of the Tk at 90°, across 2 dead logs, across an open glade on Sth side, then among tall trees on the N side of the rise. [GPS 37-53-02.2/142-02-14.3]. Camera set at 1.8 m height on a Blackwood and lure on a Manna Gum 1.5 m distant.

Habitat – Manna Gum & Cherry Ballart with dense bracken amongst lava stone.

Site 2.

Track stop – 4.2 km from Murroa Cnr, just S of a rise, on a bend in view of Menzels Scoria hill and near a stump with bracken on it.

Camera 2– set up ~ 100 m on E side of Tk, on a barrier. Track veers north near an open place. Camera set at 1.8 m on a Blackwood and lure at the same level on a Manna Gum opposite, 1.5 m distant. [GPS 37-53-13.2/142-02-51.7]

Habitat – Tall Manna Gums, sparse bracken and lava stone.

Site 3.

Track stop – 5.0 km from Murroa Cnr, at an old stone fence/track.

Camera 3– set up ~50 m W from Menzels Tk and 15 m N of old stone fence, at 1.8 m on a Blackwood and lure on a Manna Gum 1.4 m distant.

[GPS 37-53-32.6/142-02-49.6]

Habitat – tall, huge Manna Gum and some Blackwood.

Site 5.

Track stop – 5.5 km from Murroa Cnr on an old parking area towards the corner of the old reserve.

Camera 5 – set up ~120 m E from Tk (after ~80 m the route veers N through an open area and rises onto a barrier). Camera set at 1.8 m on a leaning Blackwood and lure on a very large Manna Gum 0.8 m distant. [GPS 37-53-48.9/142-03-0.1]

Habitat – open bracken, Manna Gum, Cherry Ballart and stone.

Site 4.

Track stop – 6.6 km from Murroa Cnr. Not currently in use.

Camera 4 – not operating. [GPS 37-54-23.3/142-02-56.6] – Site is W from Tk through tall, dense bracken but needs to go further west, out of view from the track.

Habitat – very dense bracken and very large, tall Manna Gum and some Blackwood.

Site 6.

Track stop – 0.3 km from Harmans Rd-Cole Tk (jn) near a parking area.

Camera 6 – ~80 m W off Cole Tk, starting ~25 m N from parking bay. Turn left at tree with burnt bole. Camera set at 1.8 m on a Manna Gum and the lure on another stem of the same tree ~1.3 m distant. [GPS 37-55-06.4/142-01-20.3].

Habitat – Tall trees and sparse bracken and stone.

Site 7

Track stop – 0.8 km from Harmans Rd, on S edge of large open area.

Camera 7 – on a rise ~100 m W. Start near 2 large trees on opposite sides of Tk, proceed under a large Cherry Ballart, through a glade and veer S. Camera set at 1.8 m on a Blackwood and the lure on a Manna Gum 1.65 m distant. [GPS 37-54-52.2/142-01-19.2]

Habitat – Tall Manna Gum and moderately dense bracken

Site 8.

Track stop –1.4 km from Harmans Rd, near a parking bay.

Camera 8 – start ~35 m N of a parking bay. Go W ~ 100m, past a Blackwood and a fallen log, through a sunk area and then veer right at a Blackwood for ~ 10 m. Camera set at 1.8 m on a Manna Gum and the lure on another Manna Gum 0.85 m distant. [GPS 37-54-29.1/142-01-20.3].

Habitat – Fairly tall Manna Gum and moderately dense bracken, with barrier lava.

Site 9.

Track stop – 2.0 km from Harmans Rd in an open area.

Camera 9 – off ~ 200 m W, starting on an old track, down and over an open grassy flat, then up ~50 m to a bare rocky area. Camera set at 1.3 m on a small Blackwood and the lure set on a very large dead Manna Gum 1.3 m distant. [GPS 37-54-10.3/142-01-17.2].

Habitat – medium and large Manna Gums in bracken but near a rather open site with barrier stone.

Site 10.

Track stop –2.6 km from Harmans Rd at site where a large log has been cut up.

Camera 10 – set up ~150 m W. After 80 m veer SW under a Blackwood and along a small stony rise to a Blackwood & manna Gum. Camera set at 1.8 m on a Blackwood and lure on a large Manna Gum 1.25 m distant. [37-53-50.8/142-01-16.2].

Habitat – medium-sized Manna Gum, Blackwood and dense bracken and barrier stone.

Observations

Mammals seen today were 10 Eastern Grey Kangaroos, 4 Red-necked Wallabies, 1 Black Wallaby, 4 Koala and 5 Feral Goats. One isolated goat was heard bleating and subsequently located by Reto; the others were seen later on Cole Track, about 2.3 km from Harmans Rd.

Photos of the camera setups at the 9 sites are shown below.



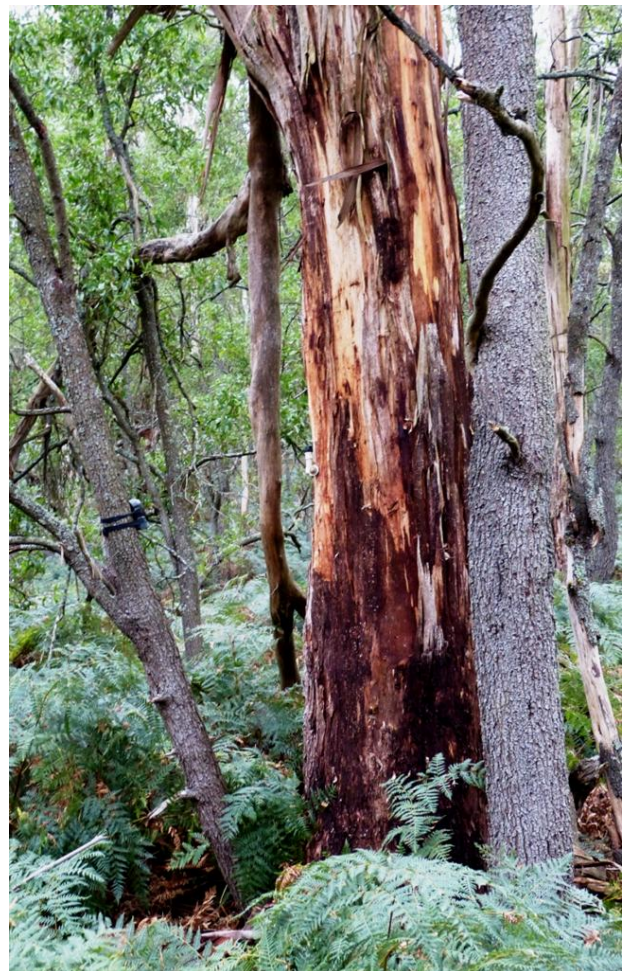
Site 1



Site 2



Site 3



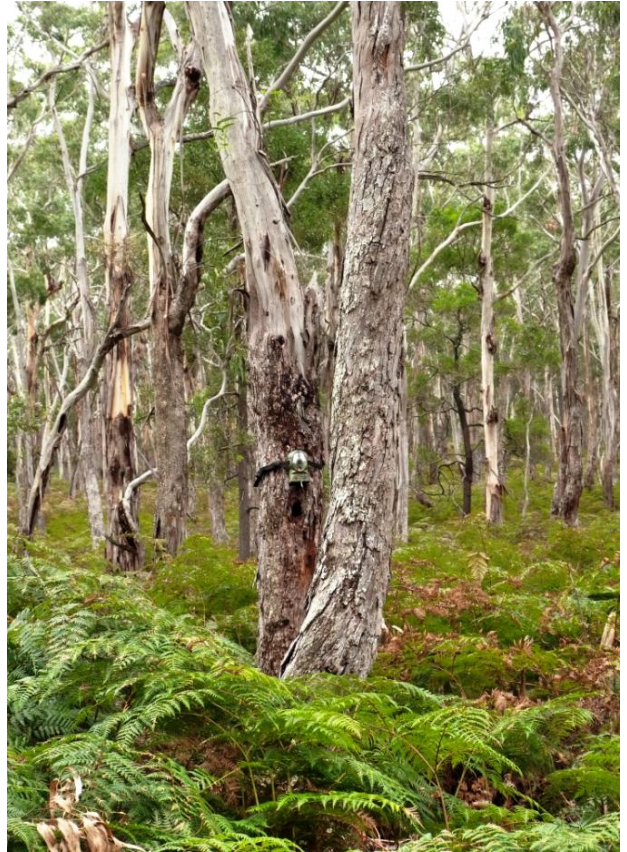
Site 5



Site 6



Site 7



Site 8



Site 9



Site 10

HFNC MT NAPIER FAUNA SURVEY Report 19 Mar-5 May 2016

Cameras were installed at 9 sites in the Mt Napier State Park on Sat 19 Mar. 2016. Cameras 1-9 were set to take 5 mpix photos day or night when triggered by motion, with 2 shots ~2 sec apart ('normal' sensitivity) then a 1-minute gap before the sequence can be repeated. ScoutGard Camera 10 (Digital Scouting Camera SG550-12mHD) was set at 12 mpix, with a gap sequence of 1 min for 2 shots ~2 sec apart and sensitivity set at 'low' to reduce the number of false shots with this wide-angled (60°) lens.

The photo results from all sites are presented in the table below. Fauna were attracted by a lure of odorous oil and a peanut butter/golden syrup attractant placed in separate containers on a tree nearby.

Data in brackets () indicate possible range in number of different individuals photographed, based on the number of animals seen in each photo and the number of clusters of sightings at different times. The upper range of individual animals reported will mostly be too high, since the same animals may return.

Remote Camera Fauna Survey at Mt Napier SP 19 Mar-5 May 2016										
Site Number	1	2	3	4	5	6	7	8	9	10
Km from Murroa Corner	3.2	4.2	5.0	6.6	5.5					
Km from Harmans Rd						0.3	0.8	1.4	2.0	2.6
SD Card No. in 19March	01	02	03	-	05	06	07	08	09	10
Camera No.	1	2	3	-	5	6	7	8	9	10
Species recorded	Photos recorded at each site									
Common Brushtail Possum	60(2-16)	2(1)		-			6(2)	37(1-8)		
Agile Antechinus				-	12(1-9)	7(1-3)				8(1-4)
Bush Rat						1(1)				
Sugar Glider				-						12(1-5)
Grey Shrike-thrush				-				2(1)		
Unknown mammal		3(1)				1(1)	2(1)	9(1)	2(1)	
No. of Species recorded	1	1-2	0	-	1	2-3	1-2	2-9	1	2
Total photos recorded	83	11	4	-	331	40	12	56	34	27
No. photos of fauna	63	5	0	-	12	9	6		2	20
No. photos with no fauna	20	6	4	-	319	31	6	8	32	6

Notes: Since all cameras had been aimed at the lures fixed 1.5-2 m above ground we were unlikely to register foxes, cats, goats, deer, echidna, wallabies or kangaroos – and we did not.

- Site 1 – Common Brushtail Possums (*Trichosurus vulpecula*) were recorded (26/3-10/4).
- Site 2 – One Common Brushtail Possum was recorded on 22/4. Three other blurred whitish photos were probably Koala (3/4 & 13/4), climbing over the camera.
- Site 3 – No animals were recorded.
- Site 4 – No camera at this site (camera inoperative).
- Site 5 – Most of the photos were 'blanks' (288 faded whitish-pink, 21 purplish-green and 10 normal photos). Agile Antechinus (*Antechinus agilis*) appeared in 12 photos (21/3-8/4).
- Site 6 – Brown Antechinus were in 7 photos (5/4-7/4) and a Bush Rat (*Rattus fuscipes*) in 1 photo (6/4). Another photo of whitish fur (30/3) may have been from a Koala (*Phascolarctos cinereus*) climbing over the camera on a second trunk of the Manna Gum.
- Site 7 – Only Common Brushtail Possums were recorded (17/4). In 2 photos there were a pair of possums plus eye-shine from an unidentified animal beyond.
- Site 8 – Common Brushtail Possums were the main species seen (19/3-24/3), but there were 9 hazy photos (19/3-25/3) in which the species could not be identified (possibly possums). A Grey Shrike-thrush (*Colluricincla harmonica*) appeared in 2 photos (22/3). All of the batteries were found to be dead when restarting the camera. A goat kid was taken to a shelter in Hamilton.
- Site 9 – All except 2 photos of fur of unidentified fauna (22/3), probably possums, were blanks.
- Site 10 – Sugar Gliders (*Petaurus breviceps*) were recorded in 12 photos (22/3-18/4). There were Agile Antechinus in 8 photos (26/3-2/5).



KEEP GUARD 3.26.2016 21:25:23

Site 1. Common Brushtail Possums, May2016



KEEP GUARD 4.03.2016 7:31:13

Site 2. Unknown, possibly Koala, May 2016



3.21.2016 23:08:15

Site 5. *Antechinus agilis*, May2016



3.30.2016 23:57:06

Site 5. *Antechinus agilis*, May2016



04.06.2016 21:30

Site 6. *Rattus fuscipes*, May 2016



03.30.2016 23:45:29

Site 6. Unknown, probably possum, May 2016



ScoutGuard 04.30.2016 01:31:

Site 7. Common Brushtails, and another eye, May 2016



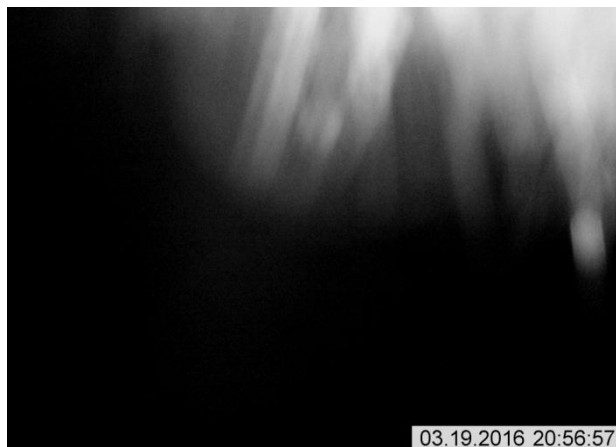
2016.04.18 10:33:30

Site 10. Site setup, May 2016



Site 8. Common Brushtail Possum, May 2016.

Site 8. Grey Shrike-thrush, May 2016.



Site 8. Unknown, probably possum May 2016



Site 9. Unknown, probably possum May 2016



Site 10. *Antechinus agilis*, May 2016



Site 10. *Antechinus agilis*, May 2016





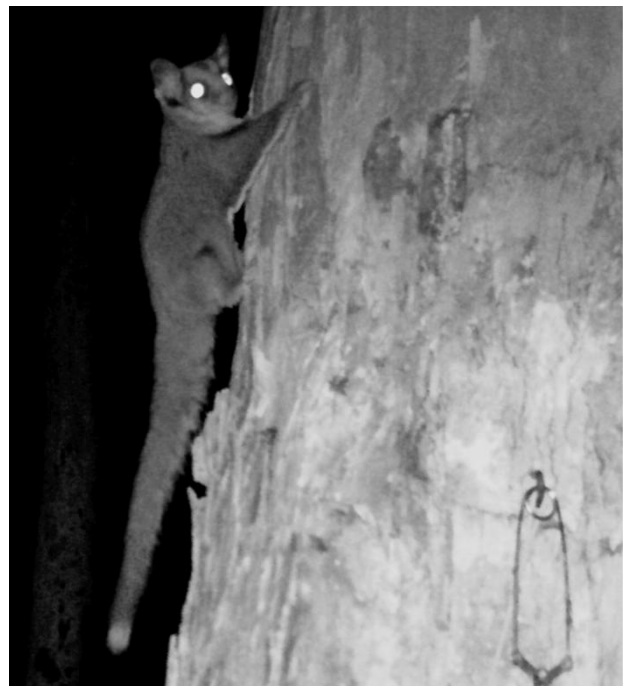
Site 10. Sugar Glider, May 2016



Site 10. Sugar Glider, May 2016



Site 10. Sugar Glider, May 2016



Site 10. Sugar Glider, May 2016



Site 8. Rod with Goat kid, May 2016

HFNC Mt Napier Fauna Survey Report, 5 May-25 June 2016

Cameras were installed at 9 sites in the Mt Napier State Park on Sat 19 Mar. 2016. Cameras 1-9 were set to take 5 mpix photos day or night when triggered by motion, with 2 shots ~2 sec apart (at 'normal' sensitivity) then a 1-minute gap before the sequence can be repeated. ScoutGard Camera 10 (Digital Scouting Camera SG550-12mHD) was set at 12 mpix, with a gap sequence of 1 min for 2 shots ~2 sec apart (sensitivity set at 'low' to reduce the number of false shots with this wide-angled 60° lens).

The photo results from all sites at 25 June are presented in the table below. Fauna were attracted by a lure of odorous oil and peanut butter/golden syrup attractant put in separate containers on a tree nearby.

Data in brackets () indicate possible range in number of individuals photographed, based on the number of animals seen in each photo and the number of clusters of sightings at different times. The upper range of individual animals reported will mostly be too high, since the same animals may be returning.

Remote Camera Fauna Survey at Mt Napier SP 5 May-25 June 2016										
Site Number	1	2	3	4	5	6	7	8	9	10
Km from Murroa Corner	3.2	4.2	5.0	6.6	5.5					
Km from Harmans Rd						0.3	0.8	1.4	2.0	2.6
SD Card No. set in May	11	12	13	-	15	16	17	18	19	20
Camera No.	1	2	3	-	5	6	7	8	9	10
Species recorded	Photos recorded at each site									
<i>Trichosurus vulpecula</i>	44(2-7)	12(1-3)	4(1)	-		10(1-4)	8(1-3)	10(1-2)		
<i>Antechinus agilis</i>				-		16(1-6)				4(1-2)?
<i>Rattus fuscipes</i>										23(2-9)
<i>Rattus rattus</i>										4(1-2)?
<i>Petaurus breviceps</i>				-	12(2-5)					31(2-16)
<i>Phascolarctos cinereus</i>			2(1)	-						
Unknown mammal			8(1)		1(1)		3(1-2)	1(1)		1(1)
No. of Species recorded	1	1	2	-	1	2	1	1		4
Total photos recorded	48	12	16	-	90	46	16	12	0	94
No. photos of fauna	44	12	14	-	13	26	11	11		63
No. photos with no fauna	4	0	2	-	77	20	5	1		31

Notes: Since all cameras had been aimed at the lures fixed 1.5-2 m above ground we were unlikely to register foxes, cats, goats, deer, echidna, wallabies or kangaroos – and we did not.

Site 1 – Common Brushtail Possums (*Trichosurus vulpecula*) were recorded on 3 nights, 5-8 May.

Site 2 – Common Brushtail Possum were seen on 3 nights, 15-21 May.

Site 3 – Koala (*Phascolarctos cinereus*) was probably the unknown mammal. Photos of Common Brushtail Possum were recorded on 3 nights, 6 May-4 June.

Site 4 – No camera at this site (camera inoperative).

Site 5 – Most of the photos were 'blanks' (62 faded whitish-pink, 6 purplish-green and 11 normal photos). Sugar Gliders (*Petaurus breviceps*) were recorded on 5 nights, 17 May to 19 June.

Site 6 – *Antechinus agilis* was seen on 5 days, 6 May-13 May. Common Brushtail Possum were seen on 4 nights, 28 May-11 June.

Site 7 – Common Brushtail Possum was seen on 3 nights, 7 May-24 May. There were 3 unknowns (close to camera), probably possum. The batteries were dead.

Site 8 – Common Brushtail Possum was seen on 1 night (date unknown). All of the batteries were dead.

Site 9 – No photos were had due to camera failure. The camera was taken home for repair.

Site 10 – Sugar Gliders were recorded on 15 nights (17 May-22 June). *Rattus fuscipes* was recorded on 5 nights (7 May-13 May), *R. rattus* or *R. norvegicus* (?) on 2 nights (8-9 May) and possibly *Antechinus agilis* on 2 nights (6 June & 11 June).

Six large Feral Goats were seen on Cole Track. This appears to be a major site for these pests. Also seen were 4 Eastern Grey Kangaroos, 1 Black Wallaby and 2 Koala.



Site 1. Site setup, MNAP, June 2016



Site 1. Common Brushtail Possums, MNAP, June 2016



Site 2. Common Brushtail Possums, MNAP, June 2016



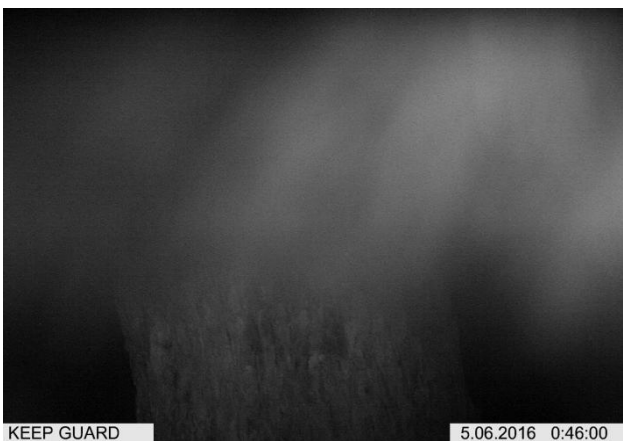
Site 3. Koala, MNAP, June 2016



Site 3. Common Brushtail Possum, MNAP, June 2016



Site 3. Site setup, MNAP, June 2016



Site 3. Unknown sp., MNAP, June 2016



Site 3. Sugar Glider, MNAP, June 2016



ScoutGuard 05.30.2016 13:38:16

Site 6. Site setup, MNAP, June 2016



2016.06.15 23:18:56

Site 10. Sugar Glider, MNAP, June 2016



05.08.2016 00:05:00

Site 6. *Antechinus agilis*, June 2016



05.28.2016

Site 6. Common Brushtail, 2016



05.07.2016

Site 7. Common Brushtail, 2016



01.01.2009 13:43:45

Site 8. Common Brushtail Possum, June 2016



ScoutGuard

05.15.2016 20:24:40

Site 7. Unknown, Koala or Possum, June 2016



2016.05.08

Site 10. *Rattus rattus*?, June 2016



2016.05.10

Site 10. *Rattus fuscipes*, June 2016



2016.05.25

Site 10. Sugar Glider, June 2016

HFNC Mt Napier Fauna Survey Report, 25 June-7 September 2016

Cameras were installed at 9 sites in the Mt Napier State Park on Sat 19 Mar. 2016. Cameras 1-9 were set to take 5 mpix photos day or night when triggered by motion, with 2 shots ~2 sec apart (at 'normal' sensitivity) then a 1-minute gap before the sequence can be repeated. ScoutGard Camera 10 (Digital Scouting Camera SG550-12mHD) was set at 12 mpix, with a gap sequence of 1 min for 2 shots ~2 sec apart (sensitivity set at 'low' to reduce the number of false shots with this wide-angled 60° lens).

The photo results from all sites at 25 June are presented in the table below. Fauna were attracted by an odorous oil and a peanut butter/golden syrup attractant placed in separate containers on a tree nearby.

Data in brackets () indicate possible range in number of different individuals photographed, based on the number of animals seen in each photo and the number of clusters of sightings at different times. The upper range of individual animals reported will mostly be too high, since the same animals may return.

Remote Camera Fauna Survey at Mt Napier SP 25 June-7 Sept. 2016										
Site Number	1	2	3	4	5	6	7	8	9	10
Km from Murroa Corner	3.2	4.2	5.0	6.6	5.5					
Km from Harmans Rd						0.3	0.8	1.4	2.0	2.6
SD Card No. set in June	1	2	3	-	5	6	7	8	9	10
Camera No.	1	2	3	-	5	6	7	8	9	10
Species recorded	Photos recorded at each site									
<i>Trichosurus vulpecula</i>	1(1)	6(1-2)	2(1)					34(1-5)		
<i>Antechinus agilis</i>						14(1-8)		6(1-3)		31(1-8)
<i>Rattus rattus</i>					5(1-3)		2(1)	6(1-2)		
<i>Petaurus breviceps</i>					38(2-13)			27(1-10)		21(1-10)
<i>Phascolarctos cinereus</i>			2(1)				4(2-3)			
Unknown mammal		3(1-2)			2(1)		4(1-2)	2(1)		
No. of Species recorded	1	1	2		2	1	2	4		2
Total photos recorded	20	14	4		242	44	14	114		116
No. photos of fauna	1	9	4		45	14	10	75		52
No. photos with no fauna	19	5	0		197	30	4	39		64

Notes: Since all cameras had been aimed at the lures fixed 1.5-2 m above ground we were unlikely to register foxes, cats, goats, deer, echidna, wallabies or kangaroos – and we did not.

Site 1 – Common Brushtail Possums (*Trichosurus vulpecula*) were recorded on 1 night, 29 June.

Site 2 – Common Brushtail Possums were seen on 2 nights, 8-15 Jul. An unidentified species (photos of fur) may also have been Common Brushtail Possum. The camera was 1.5 m from the lure.

Site 3 – A Koala (*Phascolarctos cinereus*) was recorded on 2 July and Common Brushtail Possum on 26 June.

Site 4 – No camera at this site (camera inoperative).

Site 5 – Most of the photos were 'blanks' (193 of the same type seen previously). Sugar Gliders (*Petaurus breviceps*) were recorded on 7 nights, 26 June to 15 July (a pair were seen on 27 June). Black Rat (*Rattus rattus*) were seen on 2 nights (27-30 June). The unidentified species (photos of fur) was probably Common Brushtail Possum.

Site 6 – Agile Antechinus (*Antechinus agilis*) were seen on 6 nights, 25 June-2 July. The camera was set 1.3 m from the lure on a second trunk of a Manna Gum.

Site 7 – Black Rat were seen on 5 July. Koala were seen on 2 nights (8 July & 2 Sept), in July with a baby on the back. The unidentified species (photos of fur) was probably Koala.

Site 8 – Common Brushtail Possum was seen on 3 nights (25 Jun-7 Jul). Black Rat were seen on 11 July. Sugar gliders were seen on 6 nights (26 Jun-11 Jul) and Agile Antechinus on 2 nights (26-27 Jun). The unknown species (photos of fur) was probably possum.

Site 9 – No photos were had due to camera failure in the previous period. The camera was re-set on 7 Sept.

Site 10 – Sugar Gliders were recorded on 9 nights (28Jun-29 Aug). Agile Antechinus were seen on 8 nights (26 June-10 Aug).



6.29.2016 20:32:56

Site 1. Common Brushtail Possum, MNAP, Sept 2016



7.08.2016 21:04:08

Site 2. Common Brushtail Possum, MNAP, Sept 2016



ARD

7.02.2016 13:22:21

Site 3. Koala, MNAP, Sept 2016



6.27.2016 0:05:05

Site 5. *Rattus rattus?*, MNAP, Sept 2016



Site 5. *Rattus rattus*, MNAP, Sept 2016



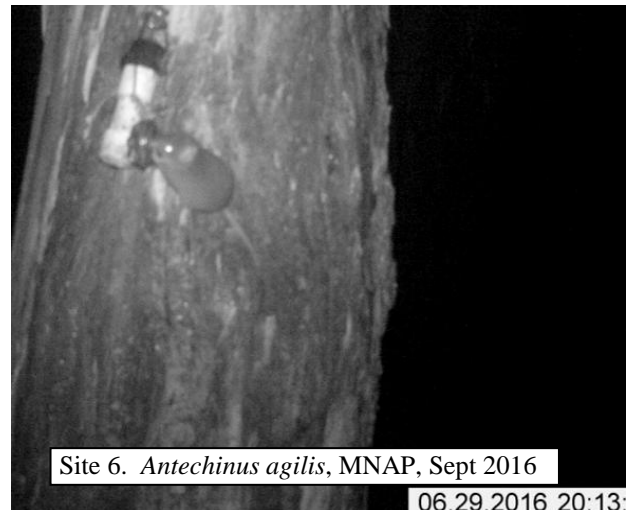
6.27.2016 20:02:29

Site 5. Sugar Glider, MNAP, Sept 2016



Site 5. Sugar Glider, MNAP, Sept 2016

6.26.2016 23:41:31



Site 6. *Antechinus agilis*, MNAP, Sept 2016

06.29.2016 20:13:31



Site 7. Koala & baby, MNAP, Sept 2016



Site 10. Agile Antechinus, MNAP, Sept 2016



Site 10. Agile Antechinus, MNAP, Sept 2016



Site 8. Sugar Glider, MNAP, Sept 2016



Site 8. *Rattus rattus*, MNAP, Sept 2016



Site 8. Sugar Glider, MNAP, Sept 2016



Site 8. Agile Antechinus, MNAP, Sept 2016



Site 8. Common Brushtail Possum, MNAP, Sept 2016

HFNC Mt Napier Fauna Survey Report, 7 Sept.-9 Nov. 2016

Cameras were installed at 9 sites in the Mt Napier State Park 7 Sept. 2016. Cameras 1-9 were set to take 5 mpix photos day or night when triggered by motion, with 2 shots ~2 sec apart (at 'normal' sensitivity) then a 1-minute gap before the sequence can be repeated. ScoutGard Camera 10 (Digital Scouting Camera SG550-12mHD) was set at 12 mpix, with a gap sequence of 1 min for 2 shots ~2 sec apart (sensitivity set at 'low' to reduce the number of false shots with this wide-angled 60° lens).

The photo results from all sites at 9 Nov. are presented in the table below. Fauna were attracted by a lure of odorous oil and a peanut butter/golden syrup attractant placed in separate containers on a tree nearby.

Data in brackets () indicate possible range in number of different individuals photographed, based on the number of animals seen in each photo and the number of clusters of sightings at different times. The upper range of individual animals reported will mostly be too high, since the same animals may return.

Remote Camera Fauna Survey at Mt Napier SP 7 Sept.-9 Nov. 2016										
Site Number	1	2	3	4	5	6	7	8	9	10
Km from Murroa Corner	3.2	4.2	5.0	6.6	5.5					
Km from Harmans Rd						0.3	0.8	1.4	2.0	2.6
SD Card No. set in Sept	11	12	13	-	15	16	17	18	19	20
Camera No.	1	2	3	-	5	6	7	8	9	10
Species recorded	Photos recorded at each site									
<i>Trichosurus vulpecula</i>		6(1-2)				14(1-5)				2(2)
<i>Antechinus agilis</i>						2(1)	2(1)			10(1-5)
<i>Rattus rattus</i>					26(1-4)					
<i>Petaurus breviceps</i>					6(1-3)				2(1)	10(3-5)
<i>Phascolarctos cinereus</i>							10(2)			
White-throated Treecreeper			2(1)							
No. of Species recorded		1	1		2	2	2		1	3
Total photos recorded		14	6		228	22	32		32	39
No. of photos of fauna		6	2		32	16	12		2	22
No. of photos with no fauna		8	4		186	6	20		30	17

Notes: Since all cameras had been aimed at the lures fixed 1.5-2 m above ground we were unlikely to register foxes, cats, goats, deer, echidna, wallabies or kangaroos – and we did not.

Site 1 – The SD card was missing in the camera – did someone remove it?

Site 2 – Common Brushtail Possums were seen on 2 nights, from 13/9 & 14/10.

Site 3 – A White-throated Treecreeper (*Climacteris affinis*) was seen on one day (10/09).

Site 4 – No camera was present at this site (camera inoperative).

Site 5 – Most of the photos were 'blanks' (182 of the washed out type seen previously). Sugar Gliders (*Petaurus breviceps*) were recorded on 3 nights, 13/09, 14/09 & 29/09. Black Rat (*Rattus rattus*) were seen on 4 nights, 8/09, 11/09/13/09 & 27/09.

Site 6 – Agile Antechinus (*Antechinus agilis*) were seen on 1 night, 10/09. Common Brushtail Possums were seen on 4 nights, 29/09, 30/09, 1/10 & 2/10.

Site 7 – A Koala with juvenile on her back was seen on 4 nights, 8/09, 18/09, 19/09 & 27/09. Agile antechinus were seen on 1 night, 24/09. A branch had fallen on this camera (4/10) and the last photo (daytime) was on 8/10. The batteries proved to be nearly flat. The camera was not reset, it being non-functional despite new batteries being fitted.

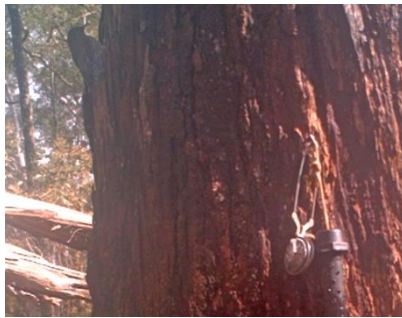
Site 8 – There were no photos on the card and the camera was non-functional. The batteries were flat. The camera was not reset, it being non-functional despite new batteries being fitted.

Site 9 – Sugar gliders were seen on 1 night, 3/10.

Site 10 – Sugar Gliders were recorded on 4 nights (11/09, 13/09, 21/09 & 3/10). Agile Antechinus were seen on 5 nights (10/09, 11/09, 12/09, 24/09 & 18/10). On the first 3 dates it was active around 5 am but on the last dates from 7.40 to 9.40 pm. A Common Brushtail Possum with a large juvenile aboard was seen on 1 night (9/11).



Site 2. Common Brushtail Possum



Site 3. White-throated Treecreeper



Site 5. *Rattus rattus*, MNAP



Site 5. Sugar Glider, MNAP



Site 6. *Antechinus agilis*, MNAP



Site 6. Common Brushtail Possum



Site 7. *Antechinus agilis?*, MNAP



Site 7. Obstructing fallen branch



Site 7. Koalas, MNAP



Site 10. Sugar Glider, MNAP



Site 10. *Antechinus agilis*, MNAP



Site 9. Sugar Glider, MNAP



Site 10. *Antechinus agilis*, MNAP



Site 10. Forest site, MNAP



Site 10. Common Brushtail Possums

HFNC Mt Napier Fauna Survey Report, 9 Nov. 2016-3 Jan. 2017

Cameras were in place at 7 sites in the Mt Napier State Park 7 on 9 Nov. 2016. Cameras 1-9 were set to take 5 mpix photos day or night when triggered by motion, with 2 shots ~2 sec apart (at 'normal' sensitivity) then a 1-minute gap before the sequence can be repeated. ScoutGard Camera 10 (Digital Scouting Camera SG550-12mHD) was set at 12 mpix, with a gap sequence of 1 min for 2 shots ~2 sec apart (sensitivity set at 'low' to reduce the number of false shots with this wide-angled 60° lens).

The photo results from all sites at 3 Jan. 2017 are presented in the table below. Fauna were attracted by a lure of odorous oil and a peanut butter/golden syrup attractant placed in separate containers on a tree nearby.

Data in brackets () indicate possible range in number of different individuals photographed, based on the number of animals seen in each photo and the number of clusters of sightings at different times. The upper range of individual animals reported will mostly be too high, since the same animals may return.

Remote Camera Fauna Survey at Mt Napier SP 9 Nov. 2016-3 Jan. 2017										
Site Number	1	2	3	4	5	6	7	8	9	10
Km from Murroa Corner	3.2	4.2	5.0	6.6	5.5					
Km from Harmans Rd						0.3	0.8	1.4	2.0	2.6
SD Card No. set in Nov.	1	2	3	-	5	6	-	-	9	10
Camera No.	1	2	3	-	5	6	-	-	9	10
Species recorded	Photos recorded at each site									
<i>Trichosurus vulpecula</i>		5(1-3)	26(2-5)			-			22(1-5)	
<i>Antechinus agilis</i>					1(1)	-				14(1-7)
<i>Rattus fuscipes</i>										4(1-2)
<i>Macropus giganteus</i>	1(1)					-				
<i>Phascolarctos cinereus</i>						-				4(1-2)
<i>Unknown</i>		1(1)	2(1)		2(1)	-			2(1)	
No. of Species recorded	1	1	1		2	-			2	3
Total photos recorded	46	36	88		40	-			310	38
No. of photos of fauna	1	6	28		3	-			24	22
No. of photos with no fauna	45	30	59		37	-			286	16

Notes: Since all cameras had been aimed at the lures fixed 1.5-2 m above ground we were unlikely to register foxes, cats, goats, deer, echidna or wallabies – but we had 1 photo of a kangaroo's head.

- Site 1 – 32 daylight photos were apparently triggered by foliage movement and only 1 animal was seen, an Eastern Grey Kangaroo photo (5/12). 14 night photos were all grey 'blanks'.
- Site 2 – Common Brushtail Possums were seen on 3 nights, 9/11, 15/11 & 16/11. The camera was 1.5 m from the lure. 1 photo showed eye spots off to side of the trunk. Foliage movement apparently triggered 20 daylight photos. 9 night photos were too dark to detect fauna.
- Site 3 – Common Brushtail Possums were seen on 4 nights (12/11, 14/11, 16/11 20/11). 2 unknowns (20/11) were probably possum. There were 55 night photos with no fauna, 44 on one night.
- Site 4 – No camera was present at this site (camera inoperative).
- Site 5 – 32 photos were washed white or pinkish 'blanks'. 1 Agile Antechinus was seen (31/12 at 3 am). There were 2 unknowns (9/12, fur of possum or Koala).
- Site 6 – No photos were recorded despite ample evidence of animals at the lures. Batteries were almost flat and camera would not function when tested later with new batteries inserted.
- Site 7 – No camera was present at this site (camera inoperative).
- Site 8 – No camera was present at this site (camera inoperative).
- Site 9 – 286 daylight photos were apparently triggered by wind-blown foliage. Common Brushtail Possums were seen on 5 nights (13/11, 15/11, 16/11, 23/11, 26/11). The 2 unknowns (16/12) were probably possum.
- Site 10 – Agile Antechinus were seen on 7 nights (11/11, 12/11, 13/11, 25/11, 27/12, 28/12 & 01/01). One animal, identified as a Bush Rat, was seen on 2 nights (10/11 & 13/11). A koala was seen on 2 nights (18/12 & 26/12).

Compared with earlier periods, there were few records of arboreal fauna. This period concludes the two-year camera survey project for the Mt Napier State Park.



Site 1. *Macropus giganteus*, MNAP



Site 2. *Trichosurus vulpecula*, MNAP



Site 2. *Unknown* (bird eyes?) MNAP



Site 3. Habitat, MNAP



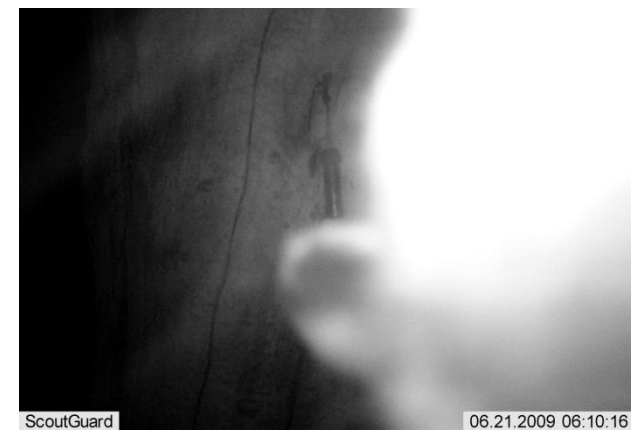
Site 3. *Trichosurus vulpecula*, MNAP



Site 3. *Unknown* (possum?), MNAP



Site 9. Habitat, MNAP



Site 9. *Unknown* (possum?), MNAP



12.31.2016 3:02

Site 5. *Antechinus agilis*, MNAP



Guard

Site 9. *Trichosurus vulpecula*, MNAP



2016.11.11 02:44

Site 10. *Antechinus agilis*, MNAP



2016.12.28 00:04

Site 10. *Antechinus agilis*, MNAP



2016.11.10 01:09

Site 10. *Rattus fuscipes*, MNAP



2016.12.18 06:00

Site 10. *Phascolarctos cinereus*, MNAP