

HFNC Excursion to Dundas Range Scenic Reserve south on 23 October 2022

Rod Bird

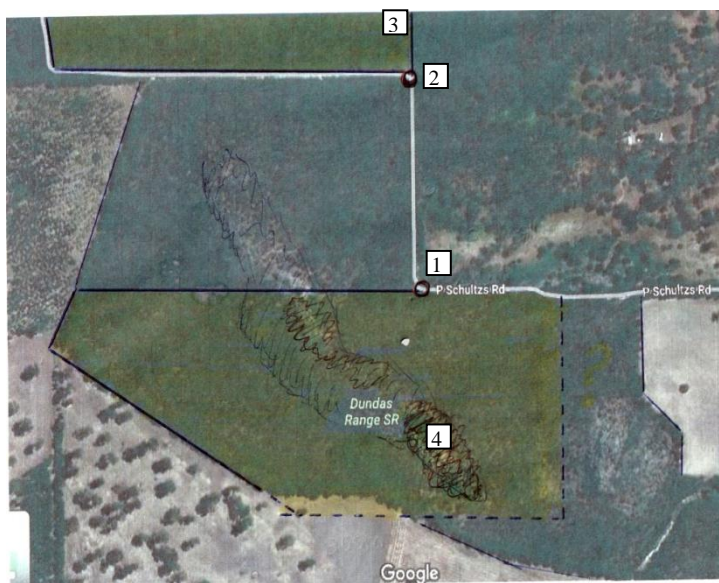
Participants: D Luhrs, R Bird, R Zollinger, Y Ingeme, P Hocking, P & W McDonald, P Lehmann, R Simpson & Jo Tully.

We left Hamilton at 9.0 am in light rain to visit the southern end of the Dundas Range. We visited the Dundas Gap area in Nov. 2018 and Sept. 2020 and the northern end of the range in June 2021. One objective then was to add to the 1968-75 plant lists of AC Beauglehole. The southern end of the range was not surveyed by ACB or by HFNC and we hoped to add to botanic information there.

Our route to the Dundas Range was via the Red Rd off the Henty Highway, turning right on the Cavendish-Coleraine Rd, left into H Huff Rd and left into P Shultzs Rd. Our destination was then about 1 km to the west. The isolated southern portion of Crown Land is immediately adjacent to the road before it takes a sharp turn to the north [1]. There are private bush blocks on the left (west) and right (east) as one drives 400 m north to find the SE corner of the main Dundas Range Scenic Reserve [2]. There is a PV sign at that corner. The 4WD track turns west at that point and then north to run along the west boundary of the reserve to the Dundas Gap Rd.

We were able to drive to the corner of Schultzs Rd [1], the track to that point not being badly affected by the recent rain which was only about 20 mm compared with over 100 mm at Hamilton in the last 48 hours.

Our first inspection was at [2] the corner of the main block (photo below, right), 400 m north from our vehicles at [1]. We walked a further 150 m along a closed 4WD track to the north and looked for orchids in an area that had suffered a fire in Feb. 2020 [3].



Orchids:

Seventeen species were seen, including one new record (Bronze Caladenia) for the Dundas Range and an unknown insect-damaged Spider Orchid:

1. Mantis Orchid (*Caladenia tentaculata*)
2. Pink Fingers (*Caladenia carnea*)
3. Bronze Caladenia (*Caladenia iridescens*)
4. Tiger Orchid (*Diuris maculata*)
5. Wallflower Orchid (*Diuris orientis*)
6. Leopard Orchid (*Diuris pardina*)
7. Musky Caladenia (*Caladenia moschata*)
8. Nodding Greenhood (*Pterostylis nutans*)
9. Small Mosquito Orchid (*Acianthis pusillus*)
10. Small Gnat Orchid (*Cyrtostylis reniformis*)
11. Rabbit-ears Orchid (*Thelymitra antennifera*)
12. Slender Sun-orchid (*Thelymitra pauciflora*)
13. Salmon Sun-orchid (*Thelymitra rubra*)
14. Wax-lip Orchid (*Glossodia major*).
15. Purplish Beard-orchid (*Calochilus robertsonii*)
16. Large Duck-orchid (*Caleana major*)



Dundas Range Scenic Reserve [2] PL

Reto found the Purplish Beard-orchids near the corner of the Nth block and, after returning to the vehicles, Large Duck-orchids (*Caleana major*) in the Sth block. Diane found the Tiger Orchid there. There were also many orchid leaves, possibly *Corybas*, *Leporella*, *Leptoceras* and *Microtis* species in both areas.

Meanwhile, light drizzle continued and we decided to investigate the southern block before breaking for lunch – hoping for a break later.



Mantis Orchid DL



Large Duck-orchid PL



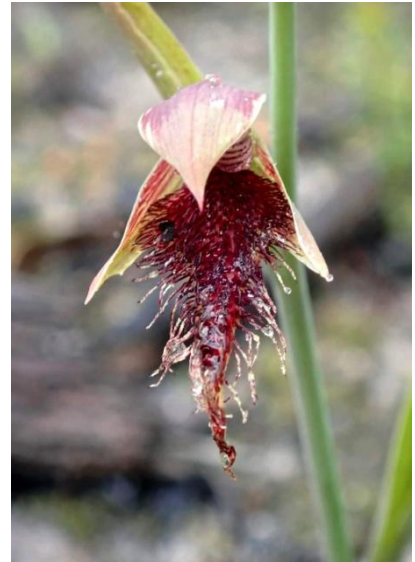
A blue sun orchid DL



Tiger Orchid DL



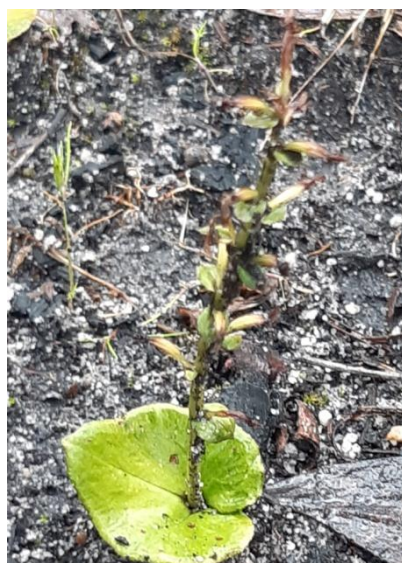
Wallflower Orchid PL



Purplish Beard-orchid PL



Leopard Orchids RZ



Small Gnat Orchid DL



P. nutans & Leopard Orchids RZ



Musky Caladenia RB



Bronze Caladenia RB



Mantis Orchid RB

One objective was to search the rocky outcrops on the southern block for different species. The approach was through fairly open woodland that had been burned in the hot fire of Feb. 2020. Nearer the main rocky outcrop [4] a Hobby flew around us, vocally objecting to our presence.

The approach to the outcrop was dominated by Nodding Blue-lily (*Stypantra glauca*), its deep blue flowers contrasting with the yellow flowers of Variable Groundsel (*Senecio pinnatifolius*) and the blue-grey foliage of Scented Groundsel (*Senecio odoratus*). Many seedling Black Wattles (*Acacia mearnsii*) were emerging through the Austral Bracken (*Pteridium esculentum*). Rock Fern (*Cheilanthes austrotenuifolia*) was a common inhabitant of the rocky slope.



Sandstone outcrop PL [4]



Nodding Blue Lily RB



Variable Groundsel RB



Scented Groundsel RB

At the sandstone outcrop we found a huge Sweet Bursaria (*Bursaria spinosa*) that was interesting in not having spines on the branches and among the leaves. Other species on the rocks were a lone Drooping Sheoak (*Allocasuarina verticillata*) and several old bushes of Manuka (*Leptospermum scoparium*) – all had been damaged but escaped the worst of the fire, due to the presence of the rocks.



Thornless, fire-damaged Sweet Bursaria RB



View north from sandstone outcrop RB



Sandstone peaks on the Sth block RB



On the ledges and crevices grew Austral Pelargonium (*Pelargonium australe*), a few shrubs of Twiggy Daisy-bush (*Olearia ramulosa*), Hairy Correa (*Correa aemula*) and a mass of Necklace Fern (*Asplenium flabellifolium*). Austral Bracken (*Pteridium esculentum*) and the Groundsels also flourished there.



Austral Pelargonium RB



Twiggy Daisy-bush RB



Hairy Correa RB



Twigg Daisy-bush RB



Leaf & capsules of Messmate RB



Cockatoo damage to a Messmate RB



Twining Fringe-lily RB



Caterpillar DL

Returning through the bush to the vehicles, Reto found the Large Duck Orchids, many still to flower. A few *Glossodia major* were still flowering. Twining Fringe-lily (*Thysanotus patersonii*), Hibbertia sp., Bent Goodenia (*Goodenia geniculata*), Showy Parrot-pea (*Dillwynia sericea*) and Mat-rushes (*Lomandra* spp. - including what appears to be *Lomandra nana*) appeared once we were off the stony slope.

There were several trees in one area that had bark stripped for several metres on the trunks and into the sapwood. That appeared to be damage done by cockatoos searching for grubs.

Oddly, the eucalypts here all appeared to be Messmate (*E. obliqua*) and not Brown Stringybark (*E. baxteri*). One expects to see Messmate in wet forests. The capsules of Messmate do not have protruding valves, the shape is wine-glass and the lower 'half' of the leaf joins the petiole obliquely (not opposite the other).



Bent Goodenia RB



Showy Parrot-pea RB



Fungi & moss on sandstone PL



Pink Fingers PL



Dwarf Mat-rush RB



Heath Tea-tree PL



A late lunch in light rain PL

Our lunch picnic was a little damp and there was no objection to the suggestion that it was time to go home. We had been lucky with the weather; it had not been a cold day and all were satisfied with our finds and visit to a place that the club had never been to before. There are more places there to visit in future years.

A list of the native flora noted on the day is provided below. Several members contributed photos – those included in this report are indicated by the photographers initials in the captions.

Flora list for Dundas Range Scenic Reserve south on 23 Oct.2022

Botanic Name	Common Name	22a	22b			
<i>Acacia mearmsii</i>	Black Wattle	P	P	<i>Senecio odoratus</i>	Scented Groundsel	F
<i>Acianthus pusillus</i>	Small Mosquito Orchid	P	P	<i>Senecio pinnatifolius</i>	Variable Groundsel	F
<i>Allocasuarina verticillata</i>	Drooping Sheoak		P	<i>Senecio quadridentatus</i>	Cotton Fireweed	P
<i>Arthropodium strictum</i>	Chocolate Lily	P	P	<i>Stypandra glauca</i>	Nodding Blue-lily	F
<i>Asplenium flabellifolium</i>	Necklace Fern		P	<i>Styphelia adscendens</i>	Golden Heath	P
<i>Brachyloma daphnoides</i>	Daphne Heath	F	F	<i>Styphelia humifusa</i>	Cranberry Heath	P
<i>Brunonia australis</i>	Blue Pincushion	P	P	<i>Tetralochea ciliata</i>	Pink-bells	F
<i>Burchardia umbellata</i>	Milk Maids	F	F	<i>Thelymitra antennifera</i>	Rabbit-ears	F
<i>Bursaria spinosa</i>	Sweet Bursaria		P	<i>Thelymitra pauciflora</i>	Slender Sun-orchid	B
<i>Caladenia carnea</i>	Pink Fingers	F	F	<i>Thelymitra rubra</i>	Salmon Sun-orchid	F
<i>Caladenia moschata</i>	Musky Caladenia	F		<i>Thysanotus patersonii</i>	Twining Fringe-lily	F
<i>Caladenia sp</i>	Spider Orchid	F		<i>Viola hederacea</i>	Ivy-leaved Violet	P
<i>Caladenia tentaculata</i>	Mantis Orchid	F	F	<i>Wahlenbergia gracilentia</i>	Hairy Annual Bluebell	F
<i>Caleana major</i>	Large Duck Orchid		F	<i>Xanthorrhoea minor</i>	Small Grass-tree	P
<i>Calochilus robertsonii</i>	Purplish Beard-orchid	F				
<i>Chaemiscilla corymbosa</i>	Blue Stars	F	F			
<i>Cheilanthes austrotenuifolia</i>	Rock Fern		P			
<i>Coronidium scorpioides</i>	Button Everlasting	B	B			
<i>Correa aemula</i>	Hairy Correa		F			
<i>Cyanothamnus nana</i>	Tiny Boronia	F	F			
<i>Cyrtostylis reniformis</i>	Small Gnat Orchid	P	P			
<i>Dianella revoluta</i>	Black-anther Flax-lily		P			
<i>Dillwynia hispida</i>	Red Parrot-pea	F				
<i>Dillwynia sericea</i>	Showy Parrot-pea		F			
<i>Diuris orientis</i>	Wallflower Orchid	F				
<i>Diuris pardina</i>	Leopard Orchid	F	F			
<i>Diuris sulphurea</i>	Tiger Orchid		F			
<i>Drosera auriculata</i>	Tall Sundew	F	F			
<i>Drosera glanduligera</i>	Scarlet Sundew	F	F			
<i>Eucalyptus obliqua</i>	Messmate Stringybark	P	P			
<i>Euchiton japonicus</i>	Creeping Cudweed	F	F			
<i>Exocarpos cupressiformis</i>	Cherry Ballart		P			
<i>Gahnia radula</i>	Thatch Saw-sedge	F	F			
<i>Galium gaudichaudii</i>	Rough Bedstraw	P				
<i>Geranium solanderi</i>	Austral Crane's-bill		F			
<i>Glossodia major</i>	Wax-lip Orchid	F	F			
<i>Goodenia geniculata</i>	Bent Goodenia	F	F			
<i>Hibbertia riparia</i>	Erect Guinea-flower	F	F			
<i>Hydrocotyle laxiflora</i>	Stinking Pennywort	P	P			
<i>Isopogon ceratophyllus</i>	Horny Cone-bush	F				
<i>Kennedia prostrata</i>	Running Postman	F	F			
<i>Leptospermum continentale</i>	Prickly Tea-tree	P	P			
<i>Leptospermum myrsinoides</i>	Heath Tea-tree	F	F			
<i>Leptospermum scoparium</i>	Manuka		P			
<i>Leucopogon virgatus</i>	Common Beard-heath	F				
<i>Lomandra filiformis</i>	Wattle Mat-rush	F				
<i>Lomandra nana</i>	Dwarf Mat-rush		F			
<i>Olearia ramulosa</i>	Twiggy Daisy-bush		F			
<i>Pelargonium australe</i>	Austral Pelargonium		F			
<i>Pimelea humilis</i>	Common Rice-flower		F			
<i>Pteridium esculentum</i>	Austral Bracken	P	P			
<i>Pterostylis nutans</i>	Nodding Greenhood	F	F			

P plant present; F plants with flowers; B plants with buds

22a - Sth end of Scenic Res (23 Oct 2022) – above the E-W part of the 4WD track (the PV sign is at the E end) and private bush block, 400 m Nth of the corner of Shultzs Rd which runs W-E.

22b - Extreme Sth end of Scenic Res (23 Oct 2022) – the Crown land block situated Sth of the W-E line of P Shultzs Rd, lying between freehold bush to the Nth and cleared farmland to the Sth.

