

HFNC BEEAR STATE FOREST FAUNA SURVEY Report 19 May to 17 June 2012

Rod Bird & Diane Luhrs

The cameras were collected from the 10 sites in the BEEAR SF on Sunday 17 June (a 4-week period of survey). The nest boxes were not inspected – it is expected that nest-building (if it occurs) would be starting during this time and we did not wish to interrupt that process. The boxes will be inspected later in the year.

One camera (No. 8) did not function – no images were found on the SD card. This camera did not function in the previous period either and must be faulty or have faulty batteries.

Species	Numbers of photos recorded at each of Sites1-10									
	1	2	3	4	5	6	7	8	9	10
Eastern Grey Kangaroo	2	1	-	6	3	14	30	-	-	-
Black Wallaby	4	-	3	-	-	-	3	-	-	-
Brush-tail Possum	4	1	1	-	4	1	8	-	8	-
Sugar Glider	-	-	-	-	-	-	3	-	-	-
Echidna	-	-	-	-	3	-	-	-	-	-
Ring-tailed Possum	-	-	2	-	-	-	-	-	-	-
Red Fox	2	-	-	-	2	-	-	-	-	-
Unidentified mammals	-	-	-	-	-	-	1	-	-	1
Red Deer	-	-	-	-	-	-	1	-	-	-
White-throated Treecreeper	-	-	1	-	-	-	-	-	-	6
Emu	-	-	-	-	-	-	-	-	1	-
Grey Currawong	-	-	-	-	-	-	1	-	-	-
Raven	-	-	1	-	-	-	-	-	-	-
Unknown bird	-	-	-	-	-	1	1	-	-	-
Photos with no fauna visible	2	7	3	-	-	3	11	-	7	1
Total No. photos taken (excluding installation and changeover events)	14	9	11	6	12	19	59	0	16	8
SD Card Number	06	07	08	09	10	16	17	18	19	20

“New” species this month:

Red Fox – e.g. Cam1, photo 030

Raven – Can3, photo 023

Grey Currawong – Cam7, photo 026

Emu – Cam9, photo 018

Ring-tailed Possum – Cam3, photo 024

Echidna – Cam5, photo 119

Red Deer – Cam7, photo 046.

At least 11 species were recorded (including at least 4 bird species). Examples are pictured below.





Grey Kangaroo

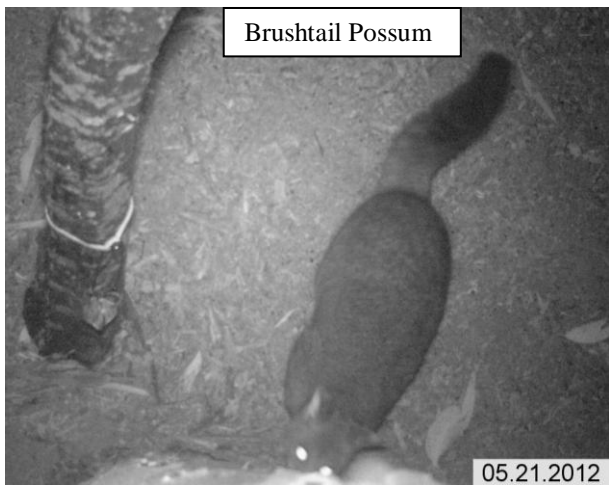


Black Wallaby



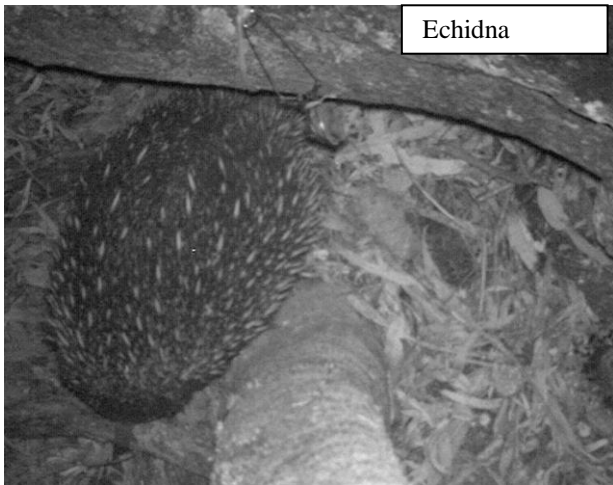
Ringtail Possum

5.27.2012 23:02:37



Brush-tail Possum

05.21.2012



Echidna



Sugar Glider



Red Fox

6.15.2012 19:34:39



Red Deer

06.10.2012 10:45:54



Grey Currawong



White-throated Treecreeper



Unknown bird sp?

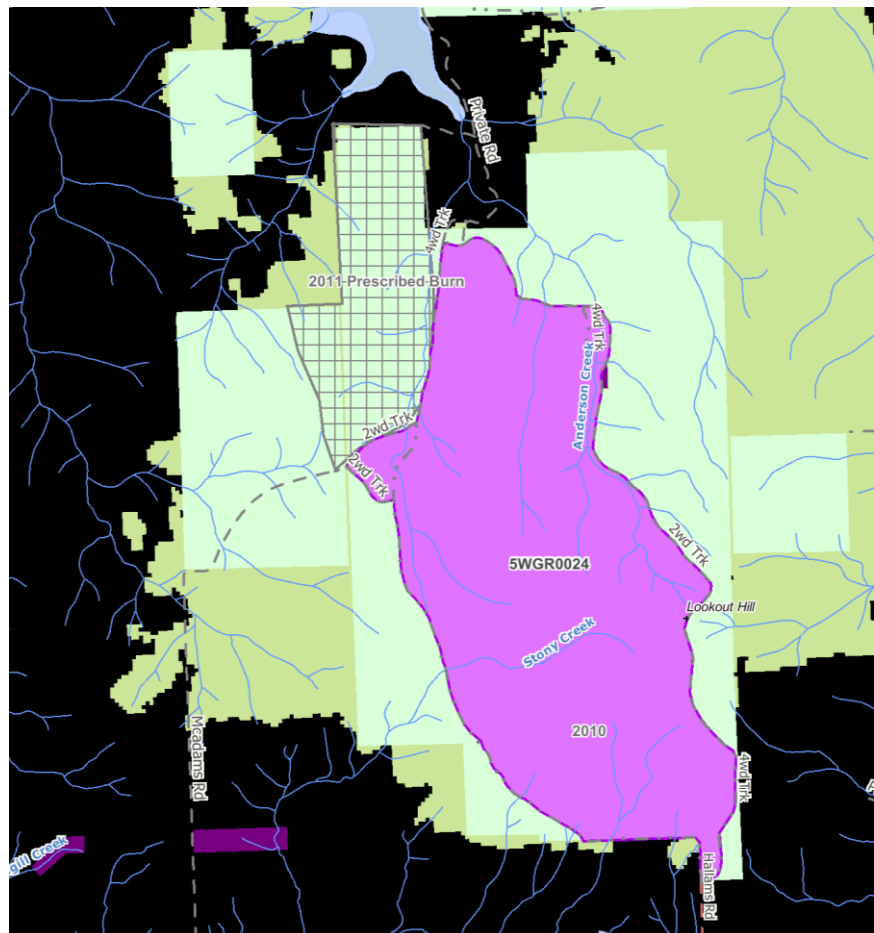


Unknown bird sp?

The map below shows the area (purple) that is scheduled to be “prescribed burned” in winter 2012. The cream-coloured area adjacent is also State Forest – those areas will not be burned in 2012.

Hallams Track runs up the western edge of the area coloured purple in the map below. Hallams Track starts from East-West Rd. At about 5 km into the forest there is a track that leads west to Craigs Rd. That track subsequently runs back south to East-West Rd. The burn area extends about 500 m along that track. The hatched area on the map is the area that was partially burned in 2011.

Our sites have been selected to keep clear of the intended 2012 burn.



Site 1.

Road stop – 0.3 km from Bear SF sign on Hallams Tk (GPS Aust84, 37-22-51.6/142-02-50.6)

Camera site – ~ 150 m west @ **37-22-52.8/142-02-46.7 [Waypoint 001 BSF Cam01]**

Habitat – Dense *E. baxteri* forest with *X. minor* understorey (unburned >60 years). Few obvious hollows.

Site 2.

Road stop – 1.0 km from Bear SF sign on Hallams Tk (GPS Aust84, 37-22-31.4/142-02-27.3)

Camera site – ~ 110 m west down a slight gully @ **37-22-34.9/142-02-25.5 [Waypoint 002 BSF Cam02]**.

Nest box site – @ **37-22-34.9/142-02-24.5 [Waypoint 003 BSF NBox 1&2]**.

Habitat – Dense *E. baxteri* forest with *X. minor* understorey (unburned >560 years). A few obvious hollows in the mature trees.

Site 3.

Road stop – 2.7 km from Bear SF sign on Hallams Tk (GPS Aust84, 37-21-47.4/142-02-06.0) in a drainage flat with Silver Banksia and Prickly Tea-tree and a large roadside log on east side.

Camera site – ~ 100 m west behind the thicket @ **37-21-47.2/142-02-02.9 [Waypoint 004 BSF Cam03]**

Nest box site – @ **37-21-45.8/142-02-2.1 [Waypoint 005 BSF NBox 3&4]**.

Habitat – *E. leucoxylon*, *E. melliodora*, *E. viminalis*, *E. baxteri*, *B. marginata*.

Site 4.

Road stop – 5.5 km from Bear SF sign on Hallams Tk and along west track to McAdams Rd (log on north side of track) (GPS Aust84, 37-21-33.6/142-01-14.7)

Camera site – ~ 150 m NW @ **37-21-32.8/142-01-11.0 [Waypoint 006 BSF Cam04]**.

Habitat – Open forest of *E. leucoxylon* & *E. melliodora* with *X. minor* & heath understorey and some logs; *E. baxteri* forest adjacent. Few obvious hollows.

Site 5.

Road stop – Dam on track to McAdams Rd (GPS Aust84, 37-21-21.6/142-01-34.3) in a drainage flat with Silver Banksia, Black Wattle, Yellow Box, Stringybark and many logs.

Camera site – ~ 100 m west behind a thicket @ **37-21-19.9/142-01-28.7 [Waypoint 007 BSF Cam05]**

Nest box site – @ **37-21-20.0/142-01-30.2 [Waypoint 008 BSF NBox 5&6]**.

Habitat – *E. melliodora*, *E. baxteri*, *B. marginata*, *A. mearnsii* and *X. minor*.

Site 6.

Road stop – 0.9 km along the 2011 Burn Tk from jn 2011 Burn Tk/McAdams Tk (GPS Aust84, 37-20-54.5/142-01-38.8) in an area partly burned in 2011, with a huge Yellow Gum present 100 m east of the track.

Camera site – ~ 100 m east of track @ **37-20-53.2/142-01-40.7 [Waypoint 009 BSF Cam06]**.

Nest box site – @ **37-20-51.2/142-01-40.1 [Waypoint 010 BSF Nbox 7&8]**.

Habitat – *E. leucoxylon* & *E. baxteri* and *X. minor* in an area partially burned in 2011.

Site 7

Road stop – 0.9 km along the 2011 Burn Tk from jn 2011 Burn Tk/McAdams Tk (GPS Aust84, 37-20-54.5/142-01-38.8), opposite the area partly burned in 2011 (see above).

Camera site – ~ 100 m west of track @ **37-20-56.5/142-01-34.3 [Waypoint 011 BSF Cam07]**

Habitat – *E. leucoxylon* & *B. marginata* in an area not burned in 2011

Site 8.

Road stop – 0.1 km along the 2011 Burn Tk from jn 2011 Burn Tk/McAdams Tk (GPS Aust84, 37-21-20.5/142-01-46.3) in an area of Stringybark east of the Burn Tk area partly burned in 2011.

Camera site – ~ 100 m east of track @ **37-21-59/142-01-49 [Waypoint 012 BSF Cam08]**.

Habitat – *E. baxteri* & *X. minor* in an area partially burned in 2011.

Site 9.

Road stop – 0.1 km along the 2011 Burn Tk from jn 2011 Burn Tk/McAdams Tk (GPS Aust84, 37-21-20.5/142-01-46.3) in an area of Stringybark west of the track not burned in 2011.

Camera site – ~ 100 m west of Burn track @ **37-21-20.6/142-01-43.1 [Waypoint 013 BSF Cam09]**

Habitat – *E. baxteri*, some *B. marginata* & *X. minor* in an area not burned in 2011.

Site 10.

Road stop – 0.7 km N on Hallams Tk from its jn with McAdams Tk (GPS Aust84, 37-20-49.3/142-02-17.8)

Camera site – ~ 200 m west of Hallams Tk @ **37-20-51.6/142-02-12.1 [Waypoint 014 BSF Cam10]**.

Nest box site – @ **37-20-49.9/142-02-12.4 [Waypoint 015 BSF NBox 9&10]** .

Habitat – *E. leucoxylon*, *E. melliodora*, *E. viminalis* & *B. marginata* open woodland with *X. minor*.