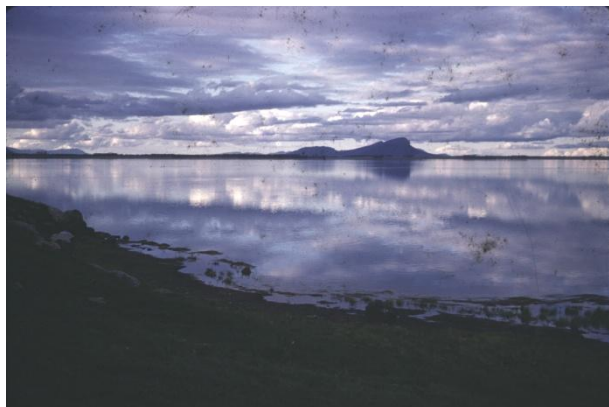


HFNC Excursion to Lake Linlithgow on 25 Feb. 1967

Murray Gunn

Several members left Lionel Elmore's gate on Chatsworth Rd at 7 am on a cool, windy and at times wet morning. Murray Gunn led the excursion.



Sunrise at Lake Linlithgow & Mt Sturgeon LE



Grazed SE corner of Lake Linlithgow, Jan. 1967 LE

Birds seen in the morning:

1. Coot – common
2. Hoary-headed Grebe – very common
3. Marsh Tern – 3 (1 in breeding plumage, 2 juvenile eclipse)
4. Silver Gull – very common
5. Spur-winged Plover – very common (in big flocks)
6. Red-capped Dotterel – 2
7. Black-fronted Dotterel – 20 in one flock
8. White-headed Stilt – 20 adults and juveniles
9. Straw-necked Ibis – about 6
10. White-faced Heron – about 12
11. Black Swan – common (2 sick birds found and 20 + dead – poison perhaps?)
12. Cape Barren Goose – at L. Kennedy, 1 flock of 12, 3 with white neck bands, and another group of 4
13. Mountain Duck – very common, very big flocks coming to the lake while we were there
14. Black Duck – about 20 in odd places
15. Grey Teal – common
16. Blue-winged Shoveller – common
17. Pink-eared Duck – about 50
18. Musk Duck – odd birds scattered over the lake
19. Goshawk – 1
20. Whistling Eagle – 1
21. Brown Hawk – 1
22. Nankeen Kestrel – 2
23. Lorikeet sp. – flying over in small flocks
24. Tree Martin – common
25. Welcome Swallow – very common
26. Willie Wagtail – 1
27. Restless Flycatcher – 2
28. White-fronted Chat – fairly common
29. Yellow-tailed Thornbill – a few in Cypress
30. Pipit – 6
31. Sparrow
32. Starling
33. Raven – common
34. White-backed Magpie
35. Mudlark

[Murray Gunn also reported on the sighting of Cape Barren Geese at Lake Linlithgow on 17/11/1966. There were 12 geese, 4 of which were wearing white collars. Mr Graham Pizzey had said that these were the first sightings of banded Cape Barren Geese in Victoria. The birds were banded in South Australia and came from the Neptune group of islands. It had previously been expected that the visitors to our lakes were from Flinders Island – and, if banded, should have had red collars. Sightings of Cape Barren Geese after the period of 1962-1977 have been rare, with just an odd bird appearing in a few years, as in Feb. 2018 at Lake Kennedy].

[For historical purposes, the common names used in the 1960s have been retained in the above list - several differ a little from the accepted names in 2024 – e.g. the Spur-winged Plover is now a Masked Lapwing, the Red-capped Dotterel is now a Red-capped Plover, the Mountain Duck is an Australian Shelduck, the White-headed Stilt is a Black-winged or Pied Stilt and the Mudlark is a Magpie-lark].



Bare E bank of Lake Linlithgow, March 1966 LE



Bare NE bank of Lake Linlithgow, March 1968 LE



Bare SE bank of Lake Linlithgow, March 1966 LE



Cattle on SE bank of Lake Linlithgow, June 1967 LE

[These prints from Lionel Elmore's slides show the degraded and treeless condition of the lake banks in the early years. HFNC began revegetation in 1975 and that was continued by John Harris (Parks Victoria) in 2002-2005, with HFNC assisting with planting on the N bank and W bank in 2003-2005. PV had grazing removed from the entire area].